



CLIMATOLOGICAL DATA

NEW JERSEY

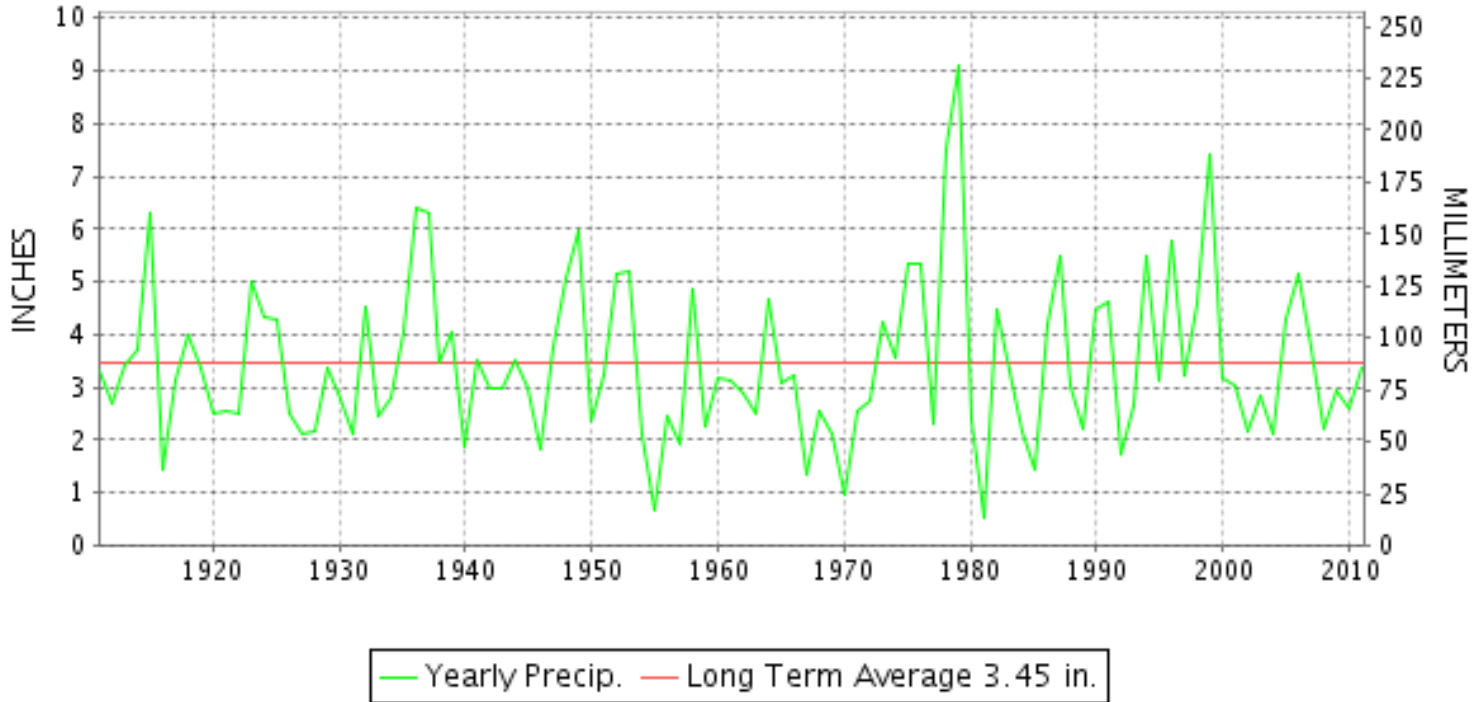
JANUARY 2011

VOLUME 116 NUMBER 01

ISSN 0364-5614

GHCND Ver: 2.80-upd-2011111606

JANUARY PRECIPITATION BY YEAR



TEMPERATURE AND PRECIPITATION EXTREMES

NEW JERSEY

HIGHEST TEMPERATURE	61	JANUARY 02	TOMS RIVER
LOWEST TEMPERATURE	-8	JANUARY 25+	SUSSEX 2 NW
GREATEST TOTAL PRECIPITATION	5.17		HARRISON
LEAST TOTAL PRECIPITATION	2.14		WOODCLIFF LAKE
GREATEST 1 DAY PRECIPITATION	1.93	JANUARY 19	SANDY HOOK
GREATEST TOTAL SNOWFALL	37.4		NEWARK INTL AP
GREATEST DEPTH OF SNOW OR ICE	25		CANOE BROOK

"I certify that this is an official publication of the National Oceanic and Atmospheric Administration (NOAA) It is compiled using information from weather observing sites supervised by NOAA/National Weather Service and received at the National Climatic Data Center(NCDC), Asheville, North Carolina 28801."

Director
National Climatic Data Center

noaa

National
Oceanic and
Atmospheric Administration

National
Environmental Satellite, Data
and Information Service

National
Climatic Data Center
Asheville, North Carolina

MONTHLY STATION AND DIVISION SUMMARY

STATION	TEMPERATURE (°F)											PRECIPITATION (IN)												
	AVERAGE MAXIMUM	AVERAGE MINIMUM	AVERAGE	DEPARTURE FROM NORMAL	HIGHEST	DATE	LOWEST	DATE	HEATING DEG. DAYS	COOLING DEG. DAYS	NO. OF DAYS				TOTAL	DEPARTURE FROM NORMAL	GREATEST 24 HOURS	DATE	ICE PELLETS, SNOW			NO. OF DAYS		
											MAX		MIN						TOTAL	MAX DEPTH ON GROUND	DATE	.10 OR MORE	.50 OR MORE	1.00 OR MORE
											>=90	<=32	<=32	<=0										
TOMS RIVER	36.7	19.0	27.9	-3.3	61	02	5	24	1143	0	0	11	30	0	F 1.28	-0.16	1.28	18	M			1	1	1
--DIVISIONAL DATA----->			27.9	-4.0											3.74									
COASTAL 03																								
ATLANTIC CITY	37.2	27.1	32.2	-3.0	50	02	11	24	1009	0	0	7	26	0	3.11	-0.33	1.21	18				6	2	1
BRANT BEACH BECH HAVEN	35.8M	24.4M	30.1M		49	19	9	25+	1040	0	0	10	27	0	M 3.16		1.17	27	M	M	M	6	3	1
CAPE MAY 2 NW	37.9	24.6	31.3	-3.0	52	01	10	24	1038	0	0	6	27	0	3.16	-0.52	1.01	26	9.4	6	31	7	2	1
SANDY HOOK	36.0M	22.4M	29.2M		49	04	8	25+	777	0	0	6	21	0	M 4.83		1.93	19	M	M	M	5	3	2
--DIVISIONAL DATA----->			30.7	-2.7											3.14	-0.70								

NEW JERSEY
201101

DAILY PRECIPITATION (INCHES)

STATION	TOTAL	DAY OF MONTH																															
		01	02	03	04	05	06	07	08	09	10	11	12	13	14	15	16	17	18	19	20	21	22	23	24	25	26	27	28	29	30	31	
NEW JERSEY																																	
NORTHERN 01																																	
BELVIDERE BRG	2.79		0.08					0.15		0.02			0.38	T				0.26	0.43	0.07	0.38					0.02		0.95		0.02	0.03	T	
BOUND BROOK 2W	2.99		0.04					0.08	0.05			0.39						0.53	0.23		0.29				T	0.24	1.14		T				
CANISTEAR RSVR	M	-	-	-	-	-	-	-	-	-	-	-	-	-	-	-	-	-	-	-	-	-	-	-	-	-	-	-	-	-	-	-	
CANOE BROOK	3.39											0.42						0.57	0.46		0.46				0.10	0.03	1.28						
CHARLOTTEBURG RSVR	M 1.83		-	0.30							0.01	0.47						-	0.68		0.37	-			-	-	-	-	-	-	-	-	
CRANFORD	4.40		0.05	0.01				0.15	0.08	0.03		0.67						0.72	0.25		0.39				0.50	0.25	1.28		0.02	T			
ESSEX FIELDS SVC BLDG	M	-	-	-	-	-	-	-	-	-	-	-	-	-	-	-	-	-	-	-	-	-	-	-	-	-	-	-	-	-	-	-	
FLEMINGTON 5 NNW	M 3.53		0.02	T				-	0.04	0.12		0.52	T			T		0.49	0.52	T	0.28				T	0.05	1.49		T	T			
GREENWOOD LAKE	M	-	-	-	-	-	-	-	-	-	-	-	-	-	-	-	-	-	-	-	-	-	-	-	-	-	-	-	-	-	-	-	-
HARRISON	5.17		0.02			0.23	0.34	0.01			0.40	0.43			T		T	1.08	0.20		0.54				0.22	0.35	1.32	T	0.03				
LAMBERTVILLE	M 4.13		0.02	0.03			0.07		0.14			0.53						0.64	0.40		0.31				0.15	1.82		0.01	0.01				
LITTLE FALLS	M	-	-	-	-	-	-	-	-	-	-	-	-	-	-	-	-	-	-	-	-	-	-	-	-	-	-	-	-	-	-	-	-
MIDLAND PARK	M 1.53		-	-	-	-	-	-	-	-	-	-	0.43																				
NEWARK INTL AP R	4.40		0.01			T	0.13	0.02			0.26	0.42					0.01	0.92	0.08		0.45				0.03	1.25	0.81	T	0.01			T	
NEW MILFORD R	3.13		0.02				0.30				0.15	0.38						0.81	0.10		0.33				0.01	0.65	0.38						
OAK RIDGE RSVR	M	-	-	-	-	-	-	-	-	-	-	-	-	-	-	-	-	-	-	-	-	-	-	-	-	-	-	-	-	-	-	-	-
PLAINFIELD	M 4.63		-	-	-	-	-	-	-	-	-	3.71															0.49	0.43					
POTTERSVILLE 2 NNW	3.30		0.03	T			0.07	0.14	0.07			0.39						0.39	0.44		0.43				0.02	0.11	1.18		T	0.03			
RINGWOOD	3.92		T				0.30	T				1.32						0.81	0.37	0.03	0.33	T					0.76						
SUSSEX 2 NW	FM 1.94		0.06				0.08	0.21	0.03			0.35						0.22	0.50		0.44	T			0.05	-		0.00 ^L	-	0.48 ^L			
WERTSVILLE 4 NE	M 3.97		0.05				-	0.13	0.13			0.48						0.59	0.43		0.32					0.10	1.74		T				
WOODCLIFF LAKE R	2.14		0.01				0.26				0.05	0.25						0.57	0.10		0.25				0.02	0.35	0.28						
SOUTHERN 02																																	
ATLANTIC CITY INTL AP	M 3.32	0.01	0.12	0.01	0.02	0.02	0.02	0.06	0.32			0.36	0.09		0.01	0.01	0.02	0.10	0.94	0.02	0.04	0.19	0.01	0.01	0.03		0.85	-	0.04	-	0.02	-	
ESTELL MANOR	3.77		0.01	0.16			T	0.09	0.32			0.44	T					1.10	0.15		0.21					0.22	1.04		0.03	T			
FREEHOLD-MARLBORO	M 3.19		-	1.30				0.03	0.05			-	-					0.67	0.84		0.24					0.04	-		0.02	T			
HAMMONTON 1 NE	3.67		0.08					0.03		0.23		0.40						0.20	0.27	0.03	0.19	0.20				0.20	1.52	0.17	0.10	0.04	0.01		
HIGHTSTOWN 2 W	M 2.87		0.05	0.02				0.08	0.13			0.39	T					0.51	0.34		0.25					0.09	0.95		0.06	T			
INDIAN MILLS 2 W	3.71		0.04					0.10	0.30			0.50						1.04	0.06							0.33	1.34						
MAYS LANDING 1 W	3.40								0.35			0.12	0.28					1.29	T	0.01	0.01					0.52	0.82					T	
MILLVILLE MUNI AP	3.35	0.01	0.13				0.11	0.05	0.07	0.02	0.09	0.06	0.11	0.05			0.09	1.23	0.07		0.17					0.75	0.31	0.03	T			T	
MOORESTOWN	4.64		0.08	0.04			0.10	0.17				0.50						1.10	0.24	0.01	0.22				T	0.45	1.70	0.03					
NEW BRUNSWICK 3 SE	3.71		0.01	0.01			0.04	0.06	0.06			0.45						0.40	0.53	T	0.33				T	0.05	1.75	T	0.01	0.01			
SEABROOK FARMS	3.34			0.04			0.13		0.12			0.42						0.91	0.27		0.15					0.17	1.13						
SOMERDALE 4 SW	4.10		0.06	0.13			T	0.07	0.15			0.46						0.74	0.28		0.21					0.08	1.89		0.03	T			
TOMS RIVER	F 1.28											0.00 ^I						1.28															
COASTAL 03																																	
ATLANTIC CITY	3.11		0.11								0.40	0.05					0.07	1.21	0.02		0.15					0.91	0.16	0.03					
BRANT BEACH BECH HAVEN	M 3.16			0.07						0.80		0.68						0.01	0.12	0.05	0.11					0.15	1.17						-
CAPE MAY 2 NW	3.16	0.07	0.11					0.01	0.24			0.35	0.01					0.20	0.91							1.01	0.02	0.04					0.01

NEW JERSEY
201101

DAILY PRECIPITATION (INCHES)

STATION	TOTAL	DAY OF MONTH																																		
		01	02	03	04	05	06	07	08	09	10	11	12	13	14	15	16	17	18	19	20	21	22	23	24	25	26	27	28	29	30	31				
SANDY HOOK	M 4.83	*	*	*	0.40 _a			T	-	0.45	-		0.60							0.20	1.93		-	-								1.25		-		

NEW JERSEY
201101

DAILY TEMPERATURES (°F)

STATION	OB. TIME	MAX/MIN	DAY OF MONTH																															AVERAGE
			01	02	03	04	05	06	07	08	09	10	11	12	13	14	15	16	17	18	19	20	21	22	23	24	25	26	27	28	29	30	31	
NEW BRUNSWICK 3 SE	07	MIN	27	43	27	29	24	21	23	16	22	21	16	15	19	18	20	13	15	20	28	31	28	13	11	6	22	27	26	21	22	16	15	21.1
		MAX	46	53	52	38	42	41	36	32	27	33	35	31	31	32	33	38	37	31	37	46	36	33	25	27	23	37	33	38	37	36	40	36.0
SEABROOK FARMS	08	MIN	28	29	26	23	24	16	17	10	12	20	13	15	20	5	9	14	20	20	31	33	28	10	3	2	2	23	27	21	22	19	12	17.9
		MAX	46	54	51	36	43	38	36	33	28	31	33	33	30	29	31	38	36	36	37	45	39	35	22	26	29	40	34	35	36	36	40	36.0
SOMERDALE 4 SW	07	MIN	35	39	28	26	29	22	26	17	20	21	14	22	21	8	12	23	19	25	30	32	30	14	13	9	9	29	27	24	26	19	21	22.3
		MAX	44	54	48	33	40	36	33	32	27	30	30	31	29	27	31	38	34	31	36	42	36	30	22	24	24	38	33	32	33	33	37	33.8
TOMS RIVER	24	MIN	22	30	25	18	18	16	20	16	19	16	13	19	20	6	12	23	16	23	30	28	28	12	8	5	7	24	27	19	20	13	16	18.4
		MAX	51	61	51	35	45	45	36	27	23	31	36	30	30	30	38	36	32	49	46	39	36	23	27	25	41	35	37	36	36	40	32	36.7
COASTAL 03 ATLANTIC CITY	24	MIN	22	27	32	21	16	16	11	13	15	14	12	22	11	10	12	17	21	32	34	32	14	10	9	5	23	30	24	24	23	19	17	19.0
		MAX	47	50	39	40	39	36	37	30	32	33	37	36	31	32	39	39	36	48	46	41	42	24	27	32	41	38	36	36	36	41	33	37.2
BRANT BEACH BECH HAVEN	07	MIN	38	36	30	30	30	27	28	24	24	23	24	26	22	20	25	28	26	36	35	33	22	17	17	11	30	32	30	30	31	30	26	27.1
		MAX	44	48	47	34	40	37	35	36	27	30	31	37	29	29	30	37	36	45	49	42	40	34	23	25	30	41	37	32	34	34		35.8
CAPE MAY 2 NW	24	MIN	32	35	28	28	30	25	26	24	22	21	20	23	22	18	20	23	24	25	33	32	33	15	16	9	9	28	29	27	28	27		24.4
		MAX	52	50	37	43	41	37	38	31	33	34	35	35	32	34	39	38	36	48	46	41	42	25	28	30	46	38	39	38	36	41	32	37.9
SANDY HOOK	20	MIN	33	35	28	27	24	20	21	24	23	24	21	25	24	17	20	22	24	35	33	29	21	15	18	10	29	31	28	25	28		24.6	
		MAX				49	42	42	42		36		34	32	32	32		36	36	36	44	42				42	25	28	34	33	33	33	30	36.0
		MIN			26	30	24	21		23		23	23	25	17		19	21	20	34	32				15	8	8	25	27	25	24	23		22.4

NEW JERSEY
201101

DAILY SOIL TEMPERATURES

STATION	DEPTH	TIME	DAY OF MONTH																															AVERAGE		
			01	02	03	04	05	06	07	08	09	10	11	12	13	14	15	16	17	18	19	20	21	22	23	24	25	26	27	28	29	30	31			
NEW JERSEY																																				
SOUTHERN 02																																				
NEW BRUNSWICK 3 SE (IN)																																				
BARE GROUND	2	MAX	31	32	31	32	32	32	32	33	32	33	32	34	32	32	32	32	32	32	33	33	32	32	31	31	31	31	31	31	31	31	31	31	31	31.9
	2	MIN	31	32	31	31	32	32	32	29	42 ¹	31	34 ¹	31	31	31	31	31	31	31	32	32	32	32	31	31	31	31	31	31	31	31	31	31	31	31.2
BARE GROUND	4	MAX	32	32	32	32	33	32	33	34	34	-	33 ¹	36	-	33	33	33	32	33	33	33	32	32	32	32	32	32	32	32	32	32	32	32	32	32.6
	4	MIN	32	32	32	32	33	32	33	34	34	-	33	35 ¹	-	32	32	32	32	33	33	32	32	32	32	32	32	32	32	32	32	32	32	32	32	32.3
BARE GROUND	8	MAX	32	32	32	32 ¹	34	33	33	36	34	34	34	35	34	33	33	33	33	33	34	33	33	32	32	32	32	32	32	32	32	32	32	32	32	33.0
	8	MIN	32	32	32	32	34 ¹	33	33	33	34	33	33	33	33	32	32	32	32	33	33	32	32	32	32	32	32	32	32	32	32	32	32	32	32	32.4
SOD	4	MAX	32	33	33	34	33	33	33	34	35	34	33	33	33	33	33	33	33	33	33	32	32	32	32	32	32	32	32	32	32	32	32	32	32	32.7
	4	MIN	32	33	33	34	33	33	33	33	33	33	33	32	32	32	32	32	32	32	32	32	32	32	32	32	32	32	32	32	32	32	32	32	32	32.4
SOD	8	MAX	32	33	33	33	33	33	34	33	32	32	33	32	33	33	33	33	33	33	33	34	33	33	32	32	32	32	32	32	32	32	32	32	32	32.6
	8	MIN	32	33	33	33	33	33	34	32	31	30	33	32	33	32	32	32	32	32	33	33	32	32	32	32	32	32	32	32	32	32	32	32	32	32.3

NEW JERSEY
201101

SOILS REFERENCE NOTES

STATION
NEW BRUNSWICK 3 SE

SOIL TYPE
LOAM

SOIL COVER
BARE GROUND

SLOPE
4

UNITS
F

SNOWFALL AND SNOW ON GROUND (INCHES)

STATION	DAY OF MONTH																															
	01	02	03	04	05	06	07	08	09	10	11	12	13	14	15	16	17	18	19	20	21	22	23	24	25	26	27	28	29	30	31	
NEW JERSEY																																
NORTHERN 01																																
BELVIDERE BRG	SNOWFALL						1.5		0.1		8.0						5.0	4.3	T	3.8					0.3		7.0		T	0.9	T	
	SN ON GND						2	2	2	-	-	8	7	6	5	5	5	-	-	5	9	9	9	9	9	8	-	11	11	12	12	
BOUND BROOK 2W	SNOWFALL						1.0	0.5			7.0						2.0			2.0					4.0	7.0						
	SN ON GND						-	-	-	-	-	-	-	-	-	-	-	-	-	2	1	1	1	1	5	12	12	12	11	10		
CANOE BROOK	SNOWFALL						0.1				6.0						T			7.0		0.4		1.0	0.5	11.0 ¹						
	SN ON GND	12	11	10	5	3	1	1				6	5	6	6	5	5	5	2	2	8	8	2	2	3 ¹	20 ¹	25	22	13	16		
CRANFORD	SNOWFALL	-	-	-	-	-	2.0	0.5	0.3	-	-	9.0	-	-	-	-	1.5	-	-	4.0	-	-	-	T	3.5	17.5		0.3	-	-		
	SN ON GND	11	6	5	5	5	7	7	7	6	6	14	13	13	12	11	10	11	10	9	12	12	12	12	12	15	24	23	23	22	22	
FLEMINGTON 5 NNW	SNOWFALL	-	-	-	-	-	-	0.3	2.0	-	-	8.0	T	-	-	T	-	1.0	-	T	3.5	-	-	-	T	0.2	14.0	-	T	T	-	
	SN ON GND	T	T	-	-	-	-	2	4	-	-	11	10	-	7	7	6	7	5	2	6	5	5	5	5	4	18	15	14	14	12	
HARRISON	SNOWFALL						2.5	0.2			4.0	4.0			T		T	2.0			5.0			1.5	2.7	13.3	T	0.1				
	SN ON GND	7	3	3	3	2	1	4	3	3	7	10	10	9	9	7	6	6	3	2	7	6	6	6	8	10	24	20	19	16	15	
MIDLAND PARK	SNOWFALL	-	-	-	-	-	-	-	-	-	-	10.5	-	-	-	-	-	-	-	-	4.0	-	-	-	-	-	10.0	-	-	-	-	
	SN ON GND	-	-	-	-	-	-	-	-	-	-	13	-	-	-	-	-	-	-	-	9	-	-	-	-	-	15	-	-	-	-	
NEWARK INTL AP R	SNOWFALL						T	2.1	0.2		2.7	6.4				0.1	1.9			4.5			0.5	11.0	7.9	T	0.1			T		
	SN ON GND	9	6	3	1	T	T	2	2	1	-	9	7	7	5	5	4	6	4	2	6	4	4	4	4	4	22	20	18	-	15	
PLAINFIELD	SNOWFALL	-	-	-	-	-	-	-	-	-	-	6.0	-	-	-	-	-	-	-	-	-	-	-	-	-	3.0	2.0	-	-	-	-	
POTTERSVILLE 2 NNW	SNOWFALL						1.0	1.3	0.9			6.3					1.0			4.2			0.2	0.8	12.1		T	0.7				
	SN ON GND	2	T	-	-	-	1	2	3	3	3	10	8	7	7	6	5	6	5	4	8	7	7	7	7	7	18	17	14	13	11	
RINGWOOD	SNOWFALL	-	-	-	-	-	4.5	-	-	-	-	10.0	-	-	-	-	2.0	-	-	4.0	-	-	-	-	-	-	13.0	-	-	-	-	
SUSSEX 2 NW	SNOWFALL						0.8	2.9	0.3			6.5					1.7	0.3		4.7	T		0.8	-	-	-	-	-	-	-	-	
	SN ON GND	5	2				1	4	5	5	4	10	8	8	7	6	6	8	8	7	10	9	9	9	10	-	-	-	-	-	-	
	WTR EQUIV	-	-	-	-	-	0.08	-	-	-	-	-	-	-	-	-	-	-	-	-	-	-	-	-	-	-	-	-	-	-	-	
WERTSVILLE 4 NE	SNOWFALL	-	-	-	-	-	-	1.7	2.5	-	-	7.5	-	-	-	-	1.5	-	-	3.5	-	-	-	-	0.8	13.0	-	T	T	-	-	
	SN ON GND	-	-	-	-	-	-	2	4	3	-	9	-	-	6	5	4	5	3	1	4	4	3	3	3	3	15	15	15	15	14	
SOUTHERN 02																																
ATLANTIC CITY INTL AP	SNOWFALL						0.3	7.7			0.6	0.9				T				T					2.1	1.3	0.3	-		0.2		
	SN ON GND	7	3						6	4	3	3	3	3	3	3	3	2							T	3	2	2	2	2	1	
ESTELL MANOR	SNOWFALL						T	1.1	5.6			2.6	T				T			T				0.9	3.6		0.1	T				
	SN ON GND	8	3	T	T	T	T	1	6	4	4	5	5	5	4	4	4	3	1	T	T	T	T	T	1	4	3	3	2	2		
FREEHOLD-MARLBORO	SNOWFALL	-	-	-	-	-	-	0.5	0.5	-	-	-	-	-	-	-	-	-	-	3.0	-	-	-	-	2.0	-	-	T	T	-	-	
	SN ON GND	-	-	-	-	-	-	4	4	-	-	-	-	-	10	10	-	9	7	5	8	6	6	6	5	6	-	18	17	17	13	
HAMMONTON 1 NE	SNOWFALL	-	-	-	-	-	-	-	2.3			4.0					T			-	-	-	-	-	-	2.3	9.0		T	T	-	
	SN ON GND	-	-	-	-	-	-	2	2	1	4	3	2	2	1	1	1	1	T	-	-	-	-	-	1	6	6	6	6	6		
HIGHTSTOWN 2 W	SNOWFALL	-	-	-	-	-	-	0.9	2.8	-	-	6.3	T				1.0	-	-	2.1	-	-	-	-	1.1	10.1	-	T	T	-	-	
	SN ON GND	4	2	T	T	-	-	1	4	-	1	6	5	4	4	4	4	3	2	1	3	2	2	2	2	3	13	11	10	10	10	
INDIAN MILLS 2 W	SNOWFALL	-	-	-	-	-	1.0	3.0	-	-	-	6.0	-	-	-	-	-	-	-	-	-	-	-	-	1.5	11.0	-	-	-	-	-	
	SN ON GND	-	-	-	-	-	-	-	-	-	-	6	5	4	3	2	2	2	1	-	-	-	-	-	-	-	-	9	6	4	4	
MOORESTOWN	SNOWFALL						1.0	2.0				6.0													T		12.0	0.3				
	SN ON GND						1	-				6	-	-	-	-	-	-	-	-	-	-	-	2	2	2	2	-	-	-	-	-

Snowfall: Includes snow and ice. Values for NWS stations (J index note) are Mid-Mid (LST).

Snow on ground: Includes snow, sleet, ice, and hail. Values for NWS stations (J index note) are observed at 12 UTC (GMT).

Water Equivalent: Given for NWS stations (J index note) only, when snow depth is 2 inches or more, and is measured at 18 UTC (GMT)

SNOWFALL AND SNOW ON GROUND (INCHES)

STATION		DAY OF MONTH																														
		01	02	03	04	05	06	07	08	09	10	11	12	13	14	15	16	17	18	19	20	21	22	23	24	25	26	27	28	29	30	31
NEW BRUNSWICK 3 SE	SNOWFALL							0.8	0.5	1.2		7.0						1.2		T	3.2					T	0.9	16.1	T	0.1	0.2	
	SN ON GND	9	5	4	4	4	3	4	5	6	5	5	12	10	10	9	8	8	9	7	6	9	8	8	8	8	8	9	22	19	19	18
SEABROOK FARMS	SNOWFALL	-	-	-	-	-	-	2.0	-	2.5	-	-	5.0	-	-	-	-	1.0	-	-	-	-	-	-	-	-	1.0	6.0	-	-	-	
	SN ON GND	-	-	-	-	-	-	2	-	2	2		5	4	4	2	2	2	1	-	-	-	-	-	-	-	1	6	5	4	3	2
SOMERDALE 4 SW	SNOWFALL							T	1.1	2.5	-	-	5.6	-	-	-	-	1.1	-	-	0.3	-	-	-	-	0.6	12.2	-	0.3	T		
	SN ON GND	2		-	-	-	-	T	T	2	1	1	6	5	5	4	2	2	3	1	T	T		-	-	1	11	9	9	9	8	
TOMS RIVER COASTAL 03	WTR EQUIV	-	-	-	-	-	-	-	-	-	-	-	-	-	-	-	-	-	-	-	-	-	-	-	-	-	-	-	-	-	-	1.20
	SNOWFALL	-	-	-	-	-	-	-	-	-	-	-	6.0 ¹	-	-	-	-	-	1.0	-	-	-	-	-	-	-	-	-	-	-	-	-
BRANT BEACH BECH HAVEN	SNOWFALL	-	-	-	-	-	-	-	-	8.0	-	-	4.0	-	-	-	-	T	-	-	-	-	-	-	-	-	-	3.0	-	-	-	-
	SN ON GND	-	-	-	-	-	-	-	-	8	-	-	4	-	-	-	-	-	-	-	-	-	-	-	-	-	-	3	1	-	-	-
CAPE MAY 2 NW	SNOWFALL							T	6.1			1.3	0.3													1.3	0.3	T		0.1		
	SN ON GND	1	T	T				6	4	3	3	3	2	2	1	1	T	T								1	1	T	T	T	T	
SANDY HOOK	SNOWFALL	-	-	-	6.0	-	-	0.5	-	-	-	-	8.0	-	-	-	-	-	-	-	-	-	-	-	-	-	-	9.0	-	-	-	-
	SN ON GND	-	-	-	6	-	-	1	-	-	-	-	8	-	-	-	-	-	-	-	-	-	-	-	-	-	-	9	-	-	-	-

Snowfall: Includes snow and ice. Values for NWS stations (J index note) are Mid-Mid (LST).

Snow on ground: Includes snow, sleet, ice, and hail. Values for NWS stations (J index note) are observed at 12 UTC (GMT).

Water Equivalent: Given for NWS stations (J index note) only, when snow depth is 2 inches or more, and is measured at 18 UTC (GMT)

STATION INDEX

STATION	INDEX NO.	DIVISION	COUNTY	LATITUDE	LONGITUDE	ELEVATION (IN FEET)	OBSERVATION TIME AND TABLES					
							LOCAL STD TIME					
							TEMP	PRECIP	EVAP	SPECIAL SEE (NOTES)		
NEW JERSEY												
ATLANTIC CITY	0325	03	ATLANTIC	39 23	74 25W	10	24	24				C
ATLANTIC CITY INTL AP	0311	02	ATLANTIC	39 27	74 34W	60	24	24				C
BELVIDERE BRG	0734	01	WARREN	40 50	75 5W	263	07	07				C
BOUND BROOK 2W	0927	01	SOMERSET	40 34	74 35W	50		07				C
BRANT BEACH BECH HAVEN	0990	03	OCEAN	39 34	74 15W	5	07	07				C
CANISTEAR RSVR	1327	01	SUSSEX	41 7	74 29W	1100		08				C
CANOE BROOK	1335	01	ESSEX	40 45	74 21W	180	08	08	08			C
CAPE MAY 2 NW	1351	03	CAPE MAY	38 57	74 56W	20	24	24				C
CHARLOTTEBURG RSVR	1582	01	PASSAIC	41 2	74 25W	760	07	07				C
CRANFORD	2023	01	UNION	40 40	74 19W	75	08	08				C
ESSEX FELS SVC BLDG	2768	01	ESSEX	40 50	74 17W	350	08	08				C
ESTELL MANOR	2805	02	ATLANTIC	39 23	74 50W	85	08	08				C
FLEMINGTON 5 NNW	3029	01	HUNTERDON	40 34	74 53W	260	07	07				C
FREEHOLD-MARLBORO	3181	02	MONMOUTH	40 19	74 15W	194	07	07				C
GREENWOOD LAKE	3516	01	PASSAIC	41 8	74 19W	470		07				C
HAMMONTON 1 NE	3662	02	ATLANTIC	39 39	74 48W	90	07	07				C
HARRISON	3704	01	HUDSON	40 45	74 9W	24	24	24				C
HIGHTSTOWN 2 W	3951	02	MERCER	40 16	74 34W	100	07	07				C
INDIAN MILLS 2 W	4229	02	BURLINGTON	39 49	74 47W	100	17	17				C
LAMBERTVILLE	4635	01	HUNTERDON	40 22	74 57W	68		09				C
LITTLE FALLS	4887	01	PASSAIC	40 53	74 14W	150	08	08				C
MAYS LANDING 1 W	5346	02	ATLANTIC	39 27	74 45W	20		09				C
MIDLAND PARK	5503	01	BERGEN	40 60	74 9W	210		08				C
MILLVILLE MUNI AP	5581	02	CUMBERLAND	39 22	75 5W	70	24	24				C
MOORESTOWN	5728	02	BURLINGTON	39 57	74 58W	45	18	18				C
NEW BRUNSWICK 3 SE	6055	02	MIDDLESEX	40 28	74 26W	86	07	07	07			CG
NEW MILFORD	6146	01	BERGEN	40 58	74 1W	12		24				C
NEWARK INTL AP	6026	01	ESSEX	40 41	74 10W	7	24	24				C
OAK RIDGE RSVR	6460	01	MORRIS	41 0	74 30W	880		08				C
PLAINFIELD	7079	01	UNION	40 36	74 24W	90	19	19				C
POTTERSVILLE 2 NNW	7301	01	MORRIS	40 44	74 44W	365		08				C
RINGWOOD	7587	01	PASSAIC	41 6	74 16W	305		07				C
SANDY HOOK	7865	03	MONMOUTH	40 28	74 0W	10	20	20				C
SEABROOK FARMS	7936	02	CUMBERLAND	39 29	75 13W	90	08	08				C
SOMERDALE 4 SW	8173	02	CAMDEN	39 50	75 3W	55	07	07				C
SUSSEX 2 NW	8644	01	SUSSEX	41 13	74 40W	649	07	07				C
TOMS RIVER	8816	02	OCEAN	39 57	74 13W	100	24	24				C
WERTSVILLE 4 NE	9363	01	HUNTERDON	40 27	74 48W	240	07	07				C
WOODCLIFF LAKE	9832	01	BERGEN	41 1	74 3W	103		24				C



CLIMATOLOGICAL DATA

NEW JERSEY

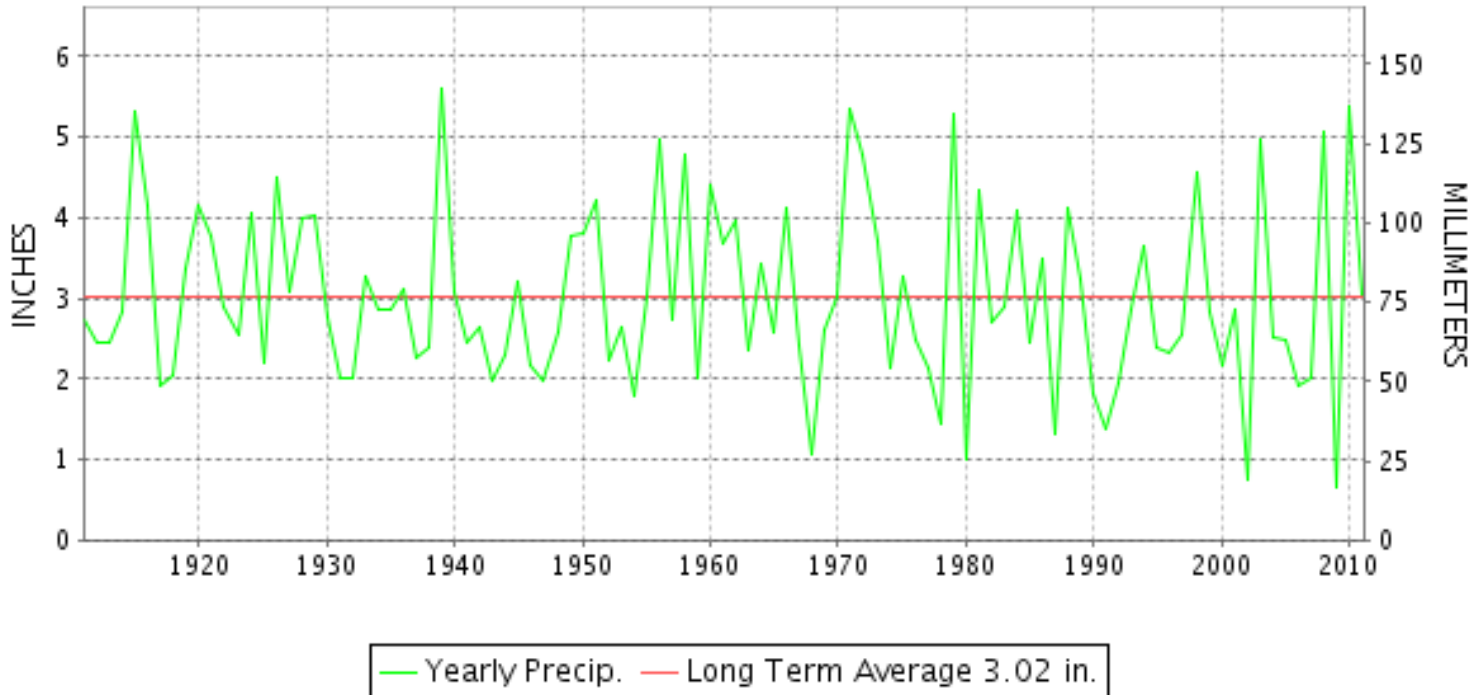
FEBRUARY 2011

VOLUME 116 NUMBER 02

ISSN 0364-5614

GHCND Ver: 2.80-upd-2011111606

FEBRUARY PRECIPITATION BY YEAR



TEMPERATURE AND PRECIPITATION EXTREMES

NEW JERSEY

HIGHEST TEMPERATURE	72	FEBRUARY 18+	2 STATIONS
LOWEST TEMPERATURE	-3	FEBRUARY 12+	SUSSEX 2 NW
GREATEST TOTAL PRECIPITATION	4.05		HARRISON
LEAST TOTAL PRECIPITATION	2.11		HIGHTSTOWN 2 W
GREATEST 1 DAY PRECIPITATION	4.00	FEBRUARY 21	BELVIDERE BRG
GREATEST TOTAL SNOWFALL	5.2		SOMERDALE 4 SW
GREATEST DEPTH OF SNOW OR ICE	21		CRANFORD

"I certify that this is an official publication of the National Oceanic and Atmospheric Administration (NOAA) It is compiled using information from weather observing sites supervised by NOAA/National Weather Service and received at the National Climatic Data Center(NCDC), Asheville, North Carolina 28801."

Director
National Climatic Data Center

noaa

National
Oceanic and
Atmospheric Administration

National
Environmental Satellite, Data
and Information Service

National
Climatic Data Center
Asheville, North Carolina

MONTHLY STATION AND DIVISION SUMMARY

STATION	TEMPERATURE (°F)											PRECIPITATION (IN)												
	AVERAGE MAXIMUM	AVERAGE MINIMUM	AVERAGE	DEPARTURE FROM NORMAL	HIGHEST	DATE	LOWEST	DATE	HEATING DEG. DAYS	COOLING DEG. DAYS	NO. OF DAYS				TOTAL	DEPARTURE FROM NORMAL	GREATEST 24 HOURS	DATE	ICE PELLETS, SNOW			NO. OF DAYS		
											MAX		MIN						TOTAL	MAX DEPTH ON GROUND	DATE	.10 OR MORE	.50 OR MORE	1.00 OR MORE
											>=90	<=32	<=32	<=0										
TOMS RIVER	48.3	23.5F	35.9F	2.9	70	17	9	11	806	0	0	1	24	0	M 5.14	-0.39	1.70	28				5	5	2
--DIVISIONAL DATA----->			35.8	1.7										2.56										
COASTAL 03																								
ATLANTIC CITY	45.8	31.6	38.7	1.8	65	18	18	09	726	0	0	2	17	0	2.75	-0.13	0.79	02				7	3	0
BRANT BEACH BECH HAVEN	43.4	28.3	35.9		62	19	17	10+	810	0	0	1	22	0	2.57		0.84	02	4.0	4	22	7	3	0
CAPE MAY 2 NW	47.3	28.5	37.9	2.1	70	18	14	11	752	0	0	2	19	0	2.75	-0.28	0.77	28	4.4	2	22	6	2	0
SANDY HOOK	44.5M	25.3M	34.9M		65	20	15	10	597	0	0	2	17	0	M 3.02		2.00	25	M			4	1	1
--DIVISIONAL DATA----->			36.9	1.8										2.69	-0.33									

NEW JERSEY
201102

DAILY PRECIPITATION (INCHES)

STATION	TOTAL	DAY OF MONTH																															
		01	02	03	04	05	06	07	08	09	10	11	12	13	14	15	16	17	18	19	20	21	22	23	24	25	26	27	28	29	30	31	
NEW JERSEY																																	
NORTHERN 01																																	
BELVIDERE BRG	M 5.99	-	0.50	0.22		0.01	0.33		0.23	-	-		-		-							4.00		0.01		0.10	0.45			0.14			
BOUND BROOK 2W	2.70	0.07	0.91				0.22		0.10																	0.78	0.21			0.30			
CANISTEAR RSVR	0.00	-	-	-	-	-	-	-	-	-	-	-	-	-	-	-	-	-	-	-	-	-	-	-	-	-	-	-	-	-			
CANOE BROOK	0.00	-	-	-	-	-	-	-	-	-	-	-	-	-	-	-	-	-	-	-	-	-	-	-	-	-	-	-	-	-			
CHARLOTTEBURG RSVR	FM 1.82	0.25	0.80	0.10			0.26		0.14																0.00 ^L	0.97 ^L	0.90 ^L	0.00 ^L		0.27			
CRANFORD	3.44	0.04	0.90			0.33	0.21		0.16														0.18			0.94	0.31			0.37			
ESSEX FIELDS SVC BLDG	0.00	-	-	-	-	-	-	-	-	-	-	-	-	-	-	-	-	-	-	-	-	-	-	-	-	-	-	-	-	-			
FLEMINGTON 5 NNW	3.26	0.11	0.96	T		0.10	0.29		0.13	T			T									T	0.15	T		0.84	0.43			0.25			
GREENWOOD LAKE	0.00	-	-	-	-	-	-	-	-	-	-	-	-	-	-	-	-	-	-	-	-	-	-	-	-	-	-	-	-	-			
HARRISON	4.05	0.12	1.02	T		0.27		0.09	0.09				T							T	T				0.02	1.52			0.55				
LAMBERTVILLE	2.69	0.10	0.86			0.03	0.18																0.03	0.03		0.83	0.35			0.28			
LITTLE FALLS	0.00	-	-	-	-	-	-	-	-	-	-	-	-	-	-	-	-	-	-	-	-	-	-	-	-	-	-	-	-	-			
MIDLAND PARK	M 2.58	-	1.04	-	-	-	-	-	0.45	-	-	-	-	-	-	-	-	-	-	-	-	-	-	-	-	-	1.09	-	-	-			
NEWARK INTL AP R	3.49	0.12	0.83	T		0.26		0.07	0.07				T		T											0.04	1.39			0.50			
NEW MILFORD R	3.58	0.16	0.76			0.20		0.08	0.12																		1.32			0.46			
OAK RIDGE RSVR	0.00	-	-	-	-	-	-	-	-	-	-	-	-	-	-	-	-	-	-	-	-	-	-	-	-	-	-	-	-	-			
PLAINFIELD	M 2.52	-	-	-	-	-	-	-	-	-	-	-	-	-	-	-	-	-	0.18	-	-	-	0.20	-	-	-	1.54	-	-	0.60			
POTTERSVILLE 2 NNW	3.35	0.07	0.78	0.08		0.01	0.24		0.21	T													0.27	0.02		0.80	0.62			0.25			
RINGWOOD	M 4.37		1.16				T		0.23	0.23														0.79		1.43			0.53				
SUSSEX 2 NW	3.65	0.25	0.63	0.17		0.06	0.31		0.23				T										0.60			0.67	0.55			0.18			
WERTSVILLE 4 NE	M 2.82	0.11	0.73	0.13			0.23		-	0.12													0.08	0.06		0.60	0.51			0.25			
WOODCLIFF LAKE R	3.48	0.17	0.66			0.20		0.05	0.12														0.47			0.01	1.26			0.54			
SOUTHERN 02																																	
ATLANTIC CITY INTL AP	M 3.19	-	0.82	0.01	0.02	0.17		0.14	-	-	-	0.03	0.05	0.02	0.01		0.03	-	0.04														
ESTELL MANOR	2.39	0.05	0.68	T		0.02	0.15		0.13		0.02												T	0.44		0.48	0.27			0.15			
FREEHOLD-MARLBORO	M 2.84	-	0.49	0.37			0.22		0.16														0.03			0.68	0.67			0.22			
HAMMONTON 1 NE	2.62		0.03	0.56			0.14		0.06	0.03														0.40	0.18	0.07	0.01	1.14					
HIGHTSTOWN 2 W	2.11	T	0.81	T			0.21		0.08															0.03	0.02		0.75			0.21			
INDIAN MILLS 2 W	2.51		0.66			0.18																		0.37		1.09			0.21				
MAYS LANDING 1 W	M 3.42		0.66					0.08	0.24														0.12	0.19	-	0.29	1.01			0.83			
MILLVILLE MUNI AP	2.85	0.08	0.68			0.18		0.05	0.01	T	T												T	0.33		T	0.83			0.69			
MOORESTOWN	M 2.38	0.03	0.75			0.21	0.02			-	-	-	-	-	-	-	-	-	-	-	-	-	0.01	-			1.06			0.30			
NEW BRUNSWICK 3 SE	2.98	0.05	0.40	0.53			0.26		0.14														0.06				0.72	0.59		0.23			
SEABROOK FARMS	2.30	0.06	0.64			0.09			0.03		T													0.32			0.71			0.45			
SOMERDALE 4 SW	2.75	0.01	0.73			0.03	0.17		0.02														T	0.46			0.68	0.41		0.24			
TOMS RIVER	M 5.14	0.58	0.56			0.05																		1.50		-	0.75			1.70			
COASTAL 03																																	
ATLANTIC CITY	2.75	0.03	0.79			0.10		0.13	0.06																		0.76			0.53			
BRANT BEACH BECH HAVEN	2.57	0.11	0.84				0.15		0.21		T													0.50			0.53	0.16	0.01	0.06			
CAPE MAY 2 NW	2.75	0.04	0.66			0.09		0.12	0.03	T	0.08													0.11	0.37		0.03	0.45		0.77			

NEW JERSEY
201102

DAILY PRECIPITATION (INCHES)

STATION	TOTAL	DAY OF MONTH																															
		01	02	03	04	05	06	07	08	09	10	11	12	13	14	15	16	17	18	19	20	21	22	23	24	25	26	27	28	29	30	31	
SANDY HOOK	M 3.02	T	0.40		-	0.40	-					-	-				-			-		-					2.00	-		0.22			

NEW JERSEY
201102

DAILY TEMPERATURES (°F)

STATION	OB. TIME	MAX/MIN	DAY OF MONTH																															AVERAGE		
			01	02	03	04	05	06	07	08	09	10	11	12	13	14	15	16	17	18	19	20	21	22	23	24	25	26	27	28	29	30	31			
NEW JERSEY NORTHERN 01																																				
BELVIDERE BRG	07	MAX		30	37	34	32	39	43	42			35		39		56	37	47	59	64	39	43	33	39	42	44	48	42	48						42.3
		MIN		17	21	7	7	21	26	27			3		16		22	17	19	32	35	19	21	14	9	9	14	27	28	33						19.3
CANOE BROOK	08	MAX																																		M
		MIN																																		M
CHARLOTTEBURG RSVR	07	MAX	29	27	35	29	30	38	41	42	34	27	24	33	35	44	54	31	45	59	60	39	36	31	35	44	44	46	40	46					38.5	
		MIN	14	20	19	9	13	21	24	24	9	9	7	9	14	16	20	17	17	33	37	16	16	9	9	6	6	25	25	32					17.0	
CRANFORD	08	MAX	30	33	31 ¹	32	32	43	43	44	39	28	23	35	37	46	54	37	46	57	60	50	38	34	34	40	46	54	45	48					41.0	
		MIN	23	26	24	18	28	33 ¹	30	37	12	21	13	25 ¹	24	38 ¹	25	22	42 ¹	48 ¹	39	21	31	17	18	22	37 ¹	29	34 ¹	39					M	
ESSEX FELS SVC BLDG	08	MAX																																	M	
		MIN																																	M	
FLEMINGTON 5 NNW	07	MAX	30	32	40	31	33	39	41	44	36	29	26	37	38	46	56	35	48	62	66	41	40	35	36	43	47	53	44	50					41.4	
		MIN	10	23	22	6	7	25	26	28	9	9	2	6	17	22	24	17	20	37	40	21	22	17	16	15	21	30	30	38					20.0	
HARRISON	24	MAX	28	36	34	34	41	46	45	40	30 ¹	28	38	40	46	60	39 ¹	49	65	69	55	40 ¹	37	35	41	43	57	44	51	60					44.9	
		MIN	23	27	24	18	25	36 ¹	29	18	14	21 ¹	16	25 ¹	24	40 ¹	27	24	42 ¹	44	23	21	24	16	23	23	33 ¹	31	37 ¹	40 ¹					M	
LITTLE FALLS	08	MAX																																	M	
		MIN																																	M	
NEWARK INTL AP	24	MAX	31	39	35	35	42	46	45	40	31	30	39	42	47	60	38	50	66	71	54	43	39	37	45	46	60	45	54	61					45.4	
		MIN	25	30	25	16	26	33	32	19	15	20	14	24	25	38	28	25	42	47	25	23	25	18	19	24	35	32	38	42					27.3	
PLAINFIELD	19	MAX	32	37	34	34	42	45	46	38	29	30	39	40	49	58	37	50	64	68	43	43	33	38	46	55	57	46	52	59					44.4	
		MIN	25	24	10	20	31	27	35	12	20	7	14	19	34	25	18	36	40	41	20	30	17	15	19	37	28	33	39	32					25.3	
SUSSEX 2 NW	07	MAX	28	21	36	31	36	38	41	39	35	29	23	33	37	42	55	31	42	56	63	35	37	26	34	39	44	38	41	45					37.7	
		MIN	4	15	19	1	4	27	23	25	2	2	-3	-3	12	20	20	14	20	32	35	17	18	10	-2	2	8	24	28	30					14.4	
WERTSVILLE 4 NE	07	MAX	30	31	38	31	34	41		44	36	27	25	36	38	45	55	34	47	64	67	41	40	32	35	44	47	58	43	50					41.2	
		MIN	15	22	23	18	19	23		30	9	11	10	15	23	30	23	20	23	42	40	20	21	17	16	17	22	29	30	33					22.3	
SOUTHERN 02																																				
ATLANTIC CITY INTL AP	24	MAX	42	60	36	40	51	49	48	42	33	33	40	46	50	65	44	51	69	72	58	46	47	37	45	45	66	47	61	70					49.8	
		MIN	30	33	21	22	33	27	25	24	16	12	9	17	22	44	20	16	45	47	30	25	27	21	16	18	34	30	36	44					26.6	
ESTELL MANOR	08	MAX	34	45	59	37	40	52	49	52	42	33	34	43	47	52	66	44	54	69	72	51	47	49	38	44	55	67	47	61					49.4	
		MIN	17	33	29	19	19	34	23	24	13	17	7	11	19	30	30	15	23	46	47	26	27	23	11	17	21	28	33	42					24.4	
FREEHOLD-MARLBORO	07	MAX		36	39	35	35	45	47	50	41	33	31	41	42	49	60	38	51	65	66	47	41	35	37	45	50	60	45	54					45.1	
		MIN		26	23	14	20	29	26	33	12	15	8	18	20	28	26	18	29	42	41	20	23	19	19	20	33	29	32	38					24.5	
HAMMONTON 1 NE	07	MAX	33	43	53	34	37	51	45	51	41	33	30	42	43	50	63	43	53	58	70	56	43	42	33	41	54	66	45	57					46.8	
		MIN	15	27	27	23	20	31	25	25	18	16	13	11	18	24	30	23	19	45	47	27	25	22	16	12	17	33	30	33					24.0	
HIGHTSTOWN 2 W	07	MAX	35	35	40	33	35	42	45	48	41	30	29	40	41	48	59	39	52	64	67	45	42	35	37	46	51	59	45	52					44.1	
		MIN	11	24	23	9	12	28	23	29	13	16	7	12	23	38	25	18	22	42	42	20	23	18	17	22	30	30	33	39					23.2	
INDIAN MILLS 2 W	17	MAX	34	44	35 ¹	35	38	44	48	44	30 ¹	30	30	36	47	57	38 ¹	50	65	69	67	43	41	35 ¹	45	47	64	43 ¹	56	67					47.9	
		MIN	26	29	26	14	27	29	26	30	12	25	5		23	43	25	20	42	51	38	26	31	20	16	15	36	24	29	39					26.9	
MILLVILLE MUNI AP	24	MAX	36	54	33	38	48	45	47	41	31	30	41	43	50	65	42	53	64	71	57	45	45	34	41	44	44	58	68					47.0		
		MIN	28	32	21	19	32	25	24	23	12	10	7	15	20	41	18	16	42	48	31	27	26	10	6	16		27	32	45					24.2	
MOORESTOWN	18	MAX	32	40	41	35	36	45	48																											M

NEW JERSEY
201102

DAILY TEMPERATURES (°F)

STATION	OB. TIME	MAX/MIN	DAY OF MONTH																															AVERAGE	
			01	02	03	04	05	06	07	08	09	10	11	12	13	14	15	16	17	18	19	20	21	22	23	24	25	26	27	28	29	30	31		
NEW BRUNSWICK 3 SE	07	MIN	26	28	24	17	23	33	26																										M
		MAX	35	32	38	35	35	42	46	48	41	31	30	40	42	46	61	38	50	66	70	45	43	37	39	46	49	59	45	54				44.4	
SEABROOK FARMS	08	MIN	12	25	25	11	15	28	26	26	13	13	8	10	20	24	27	19	24	42	43	21	21	18	18	18	18	30	31	34				22.1	
		MAX	32	48	50	33	38	47	44	48	40	31	29	42	43	50	63	40	54	65	70	48	44	43	34	41	55	66	44	58				46.4	
SOMERDALE 4 SW	07	MIN	22	31	27	22	29	28	32	34	16	22	15	23	26	34	31	23	31	46	45	27	28	22	15	23	33	32	35	41				28.3	
		MAX	32	32	41	31	34	40	42	47	37	30	27	38	40	48	59	37	50	64	65	45	42	40	34	40	50	61	44	54				43.0	
TOMS RIVER	24	MIN	16	26	24	13	15	30	23	24	12	15	6	11	20	32	27	17	20	39	43	23	28	20	10	10	19	27	31	40				22.2	
		MAX	38	55	34	37	51	45	48	42	34	30	41	42	49	62	38	54	70	69	69	42	42	38	45	48	60	47	55	67				48.3	
COASTAL 03 ATLANTIC CITY	24	MIN	29	31	17	17	31	27	29	18	14	11	9	17	22	31	17	18	36	48	24	22	22	16	17	18	29	29	29	35				23.5	
		MAX	40	50	38	37	49	47	43	43	32	31	37	44	50	62	46	43	51	65	63	44	44	36	38	42	55	41	54	57				45.8	
BRANT BEACH BECH HAVEN	07	MIN	32	33	29	28	36	36	33	26	18	24	24	32	32	42	31	29	43	44	31	26	27	24	24	31	36	34	39	42				31.6	
		MAX	37	41	50	33	38	46	46	45	40	33	31	37	43	45	58	38	43	52	62	45	41	42	35	40	45	52	43	55				43.4	
CAPE MAY 2 NW	24	MIN	24	31	28	26	26	34	30	31	17	17	22	25	30	32	30	26	29	42	43	24	25	22	21	22	29	33	33	40				28.3	
		MAX	42	58	35	38	47	46	47	43	32	32	40	46	48	62	41	47	58	70	53	43	48	37	43	43	64	43	55	62				47.3	
SANDY HOOK	20	MIN	32	33	28	26	35	28	26	26	18	16	14	20	26	40	24	20	42	41	35	29	28	20	20	22	36	32	38	43				28.5	
		MAX	31	35	38		35		45	41	41	31			39	48	57		57	55				41	36	42	43		58	51				M	
		MIN	23	27	28		27		24	25	16	15			18	33	28		25	40			19	19	21	27		32	37				M		

NEW JERSEY
201102

DAILY SOIL TEMPERATURES

STATION	DEPTH	TIME	DAY OF MONTH																															AVERAGE
			01	02	03	04	05	06	07	08	09	10	11	12	13	14	15	16	17	18	19	20	21	22	23	24	25	26	27	28	29	30	31	
NEW JERSEY																																		
SOUTHERN 02																																		
NEW BRUNSWICK 3 SE (IN)																																		
BARE GROUND	2	MAX	31	-	33	32	35	33	33	35	32	32	31	33	33	34	31	32	33	31	36	37	35	33	34	34	35	44	40	46				34.4
	2	MIN	31	-	33	31	30	30	31	33	31	31	30	31	31	29	30	30	31	30	31	30	28	33	32	31	30	34	34	36				31.2
BARE GROUND	4	MAX	32	-	34	35	35	36	32	35	32	32	33	32	32	36	32	33	34	34	38	38	34	34	-	36	38	44	37 ¹	46				35.1
	4	MIN	32	-	34	34	29	32	30	32	32	32	32	32	32	31	32	32	31	32	34	32	33	-	32	34	36	35	41 ¹					32.4
BARE GROUND	8	MAX	32	-	34	33	36	35	35	34	32	33	33	33	35	34	32	32	32	32	36	39	35	34	34	36	35	40	36	43				34.6
	8	MIN	32	-	33	32	32	30	30	32	29	31	31	30	30	29	31	30	31	30	30	28	33	33	30	31	33	33	35	36				31.3
SOD	4	MAX	32	32	33	33	32	32	32	33	32	32	32	33	32	31	31	32	32	34	38	38	36	35	34	34	34	37	34	39				33.5
	4	MIN	32	32	32	32	32	32	32	32	32	32	32	32	32	31	31	31	31	32	31	34	36	35	33	33	33	34	33	33	35			32.5
SOD	8	MAX	32	-	33	32	42	35	36	35	31 ¹	32	32	32	32	32	33	31	33	34	41	38	35	37	35	35	34	39	34 ¹	40				34.8
	8	MIN	32	-	32	32	22	30	30	33 ¹	30	31	31	32	32	32	29	29	32	31	32	31	35	34	31	33	33	31	32	36 ¹				31.2

NEW JERSEY
201102

SOILS REFERENCE NOTES

STATION
NEW BRUNSWICK 3 SE

SOIL TYPE
LOAM

SOIL COVER
BARE GROUND

SLOPE
4

UNITS
F

SNOWFALL AND SNOW ON GROUND (INCHES)

STATION	DAY OF MONTH																															
	01	02	03	04	05	06	07	08	09	10	11	12	13	14	15	16	17	18	19	20	21	22	23	24	25	26	27	28	29	30	31	
NEW JERSEY																																
NORTHERN 01																																
BELVIDERE BRG	SNOWFALL	-	-	-	-	-	-	-	-	-	-	-	-	-	-	-	-	-	-	-	-	4.0	-	0.2	-	-	-	-	-	-	-	-
	SN ON GND	-	13	12	12	12	9	9	9	-	9	-	8	-	6	6	T	2	-	-	4	3	1	-	-	-	-	-	-	-	-	
BOUND BROOK 2W	SNOWFALL	1.0	1.0																		1.0											
	SN ON GND	10	8	7	7	7	6	4	2	2	2	1	1	1	1	1	1			1	1											
CRANFORD	SNOWFALL	0.5	0.2	-	-	0.2	-	-	-	-	-	-	-	-	-	-	-	-	-	-	2.5	-	-	-	-	-	-	-	-	-	-	
	SN ON GND	21	20	20	19	18	17	16	16	15	15	14	13	13	12	11	11	10	9	6	5	8	8	7	6	4	3	T				
FLEMINGTON 5 NNW	SNOWFALL	0.5	0.8	-	-	-	-	-	-	T	-	-	-	-	-	-	-	-	-	T	1.8	T	-	-	-	-	-	-	-	-	-	
	SN ON GND	13	12	11	10	10	10	8	6	6	5	5	5	4	4	3	2	2	1	T	T	2	1	T	T	-	-	-	-	-		
HARRISON	SNOWFALL	1.0	0.2	T		T				T			T							T	3.5											
	SN ON GND	15	15	14	14	13	11	10	9	9	9	8	7	6	3	2	1				3	2										
NEWARK INTL AP R	SNOWFALL	0.6	0.8	T		T				T			T							T	2.7			T								
	SN ON GND	15	15	14	13	13	11	9	6	5	4	3	2	1	1						2	2	1	-	-	-	-	-	-	-	-	
PLAINFIELD	SNOWFALL	-	-	-	-	-	-	-	-	-	-	-	-	-	-	-	-	-	-	-	-	1.5	-	-	-	-	-	-	-	-	-	
POTTERSVILLE 2 NNW	SNOWFALL	0.3	1.1			0.1				T											3.2	0.2										
	SN ON GND	11	12	9	9	9	8	7	6	5	5	5	5	4	4	3	3	3	2	1	1	3	2	2	1							
RINGWOOD	SNOWFALL	-	3.0	-	-	-	-	-	-	-	-	-	-	-	-	-	-	-	-	-	-	-	-	-	-	-	-	-	-	-	-	
	SN ON GND	-	3	-	-	-	-	-	-	-	-	-	-	-	-	-	-	-	-	-	-	-	-	-	-	-	-	-	-	-	-	
SUSSEX 2 NW	SNOWFALL	2.3	1.9	0.4		0.2				T ^I			T								7.2 ^I											
	SN ON GND	13	14	14	14	14	13	13	12	12	11	11	11	11	10	9	9	9	9	6	6 ^I	15 ^I	13	12	12	10	9	9	8			
	WTR EQUIV	-	-	-	-	-	2.90	-	-	-	-	-	-	-	-	-	-	-	-	-	-	-	-	-	-	-	-	-	-	-	-	
WERTSVILLE 4 NE	SNOWFALL	0.8	-	-	-	-	-	-	-	-	-	-	-	-	-	-	-	-	-	-	0.8	0.6										
	SN ON GND	14	13	12	11	11	11	-	8	8	8	7	7	6	4	2	2	1			1	1										
SOUTHERN 02																																
ATLANTIC CITY INTL AP	SNOWFALL	T		-		-				T	0.2										1.0	2.5										
	SN ON GND	1									T											3	1									
ESTELL MANOR	SNOWFALL	0.3						-	-	-	0.3		-	-	-	-	-	-	-	-	-	4.5										
	SN ON GND	3	1	T	T	T		-	-	-	T	T		-	-	-	-	-	-	-	-	5	3	2								
FREEHOLD-MARLBORO	SNOWFALL	-	-	-	-	-	-	-	-	-	-	-	-	-	-	-	-	-	-	-	T	-	-	-	-	-	-	-	-	-	-	
	SN ON GND	-	9	6	5	4	3	3	3	3	3	3	2	2	1	1																
HAMMONTON 1 NE	SNOWFALL		T																			0.4 ^I										
	SN ON GND	6	3	T	T	T															1	4 ^I	3	2								
HIGHTSTOWN 2 W	SNOWFALL	T	1.5	-	-	-	-	-	-	-	-	-	-	-	-	-	-	-	-	-	0.3	0.2	-	-	-	-	-	-	-	-	-	
	SN ON GND	9	11	9	9	6	6	6	5	5	5	5	5	4	4	3	3	1	T	-	T	T	-	-	-	-	-	-	-	-	-	
INDIAN MILLS 2 W	SNOWFALL																					4.0										
	SN ON GND	3	2	1	1	1	1	-	-	-	-	-	-	-	-	-	-	-	-	-	-	4	2	1	-	-	-	-	-	-	-	
MOORESTOWN	SNOWFALL	-	-	-	-	-	-	-	-	-	-	-	-	-	-	-	-	-	-	-	T	-										
	SN ON GND	-	-	-	-	-	-	-	-	-	-	-	-	-	-	-	-	-	-	-	-	-	-	-	-	-	-	-	-	-	-	
NEW BRUNSWICK 3 SE	SNOWFALL	0.4	0.3	-	-	-	-	-	-	-	-	-	-	-	-	-	-	-	-	-		1.0										
	SN ON GND	17	15	14	13	13	12	11	9	9	8	8	8	7	6	5	5	4	1			1										
	WTR EQUIV	-	-	-	-	-	I	I	I	-	-	-	I	I	I	-	-	-	-	-		0.10										

Snowfall: Includes snow and ice. Values for NWS stations (J index note) are Mid-Mid (LST).

Snow on ground: Includes snow, sleet, ice, and hail. Values for NWS stations (J index note) are observed at 12 UTC (GMT).

Water Equivalent: Given for NWS stations (J index note) only, when snow depth is 2 inches or more, and is measured at 18 UTC (GMT)

SNOWFALL AND SNOW ON GROUND (INCHES)

STATION		DAY OF MONTH																														
		01	02	03	04	05	06	07	08	09	10	11	12	13	14	15	16	17	18	19	20	21	22	23	24	25	26	27	28	29	30	31
SEABROOK FARMS	SNOWFALL	-	-			-			-		T												3.0									
	SN ON GND	2	2						-	-	-												3	2	2	-	-	-	-	-	-	-
SOMERDALE 4 SW	SNOWFALL	T	T			T							T									-	5.2									
	SN ON GND	7	6	5	4	4	4	3	1	1	1	T	T	T								-	5	3	1	-	-	-	-	-	-	
COASTAL 03																																
BRANT BEACH BECH HAVEN	SNOWFALL																						4.0									
	SN ON GND																						4									
CAPE MAY 2 NW	SNOWFALL									0.2	0.7											0.7	2.8									
	SN ON GND									T	T											1	2	1								
SANDY HOOK	SNOWFALL	T	-	-	-	-	-	-	-	-	-	-	-	-	-	-	-	-	-	-	-	-	-	-	-	-	-	-	-	-	-	

Snowfall: Includes snow and ice. Values for NWS stations (J index note) are Mid-Mid (LST).

Snow on ground: Includes snow, sleet, ice, and hail. Values for NWS stations (J index note) are observed at 12 UTC (GMT).

Water Equivalent: Given for NWS stations (J index note) only, when snow depth is 2 inches or more, and is measured at 18 UTC (GMT)

STATION INDEX

STATION	INDEX NO.	DIVISION	COUNTY	LATITUDE	LONGITUDE	ELEVATION (IN FEET)	OBSERVATION TIME AND TABLES			
							LOCAL STD TIME			
							TEMP	PRECIP	EVAP	SPECIAL SEE (NOTES)
NEW JERSEY										
ATLANTIC CITY	0325	03	ATLANTIC	39 23	74 25W	10	24	24		C
ATLANTIC CITY INTL AP	0311	02	ATLANTIC	39 27	74 34W	60	24	24		C
BELVIDERE BRG	0734	01	WARREN	40 50	75 5W	263	07	07		C
BOUND BROOK 2W	0927	01	SOMERSET	40 34	74 35W	50		07		C
BRANT BEACH BECH HAVEN	0990	03	OCEAN	39 34	74 15W	5	07	07		C
CANISTEAR RSVR	1327	01	SUSSEX	41 7	74 29W	1100		08		C
CANOE BROOK	1335	01	ESSEX	40 45	74 21W	180	08	08	08	C
CAPE MAY 2 NW	1351	03	CAPE MAY	38 57	74 56W	20	24	24		C
CHARLOTTEBURG RSVR	1582	01	PASSAIC	41 2	74 25W	760	07	07		C
CRANFORD	2023	01	UNION	40 40	74 19W	75	08	08		C
ESSEX FELS SVC BLDG	2768	01	ESSEX	40 50	74 17W	350	08	08		C
ESTELL MANOR	2805	02	ATLANTIC	39 23	74 50W	85	08	08		C
FLEMINGTON 5 NNW	3029	01	HUNTERDON	40 34	74 53W	260	07	07		C
FREEHOLD-MARLBORO	3181	02	MONMOUTH	40 19	74 15W	194	07	07		C
GREENWOOD LAKE	3516	01	PASSAIC	41 8	74 19W	470		07		C
HAMMONTON 1 NE	3662	02	ATLANTIC	39 39	74 48W	90	07	07		C
HARRISON	3704	01	HUDSON	40 45	74 9W	24	24	24		C
HIGHTSTOWN 2 W	3951	02	MERCER	40 16	74 34W	100	07	07		C
INDIAN MILLS 2 W	4229	02	BURLINGTON	39 49	74 47W	100	17	17		C
LAMBERTVILLE	4635	01	HUNTERDON	40 22	74 57W	68		09		C
LITTLE FALLS	4887	01	PASSAIC	40 53	74 14W	150	08	08		C
MAYS LANDING 1 W	5346	02	ATLANTIC	39 27	74 45W	20		09		C
MIDLAND PARK	5503	01	BERGEN	40 60	74 9W	210		08		C
MILLVILLE MUNI AP	5581	02	CUMBERLAND	39 22	75 5W	70	24	24		C
MOORESTOWN	5728	02	BURLINGTON	39 57	74 58W	45	18	18		C
NEW BRUNSWICK 3 SE	6055	02	MIDDLESEX	40 28	74 26W	86	07	07	07	CG
NEW MILFORD	6146	01	BERGEN	40 58	74 1W	12		24		C
NEWARK INTL AP	6026	01	ESSEX	40 41	74 10W	7	24	24		C
OAK RIDGE RSVR	6460	01	MORRIS	41 0	74 30W	880		08		C
PLAINFIELD	7079	01	UNION	40 36	74 24W	90	19	19		C
POTTERSVILLE 2 NNW	7301	01	MORRIS	40 44	74 44W	365		08		C
RINGWOOD	7587	01	PASSAIC	41 6	74 16W	305		07		C
SANDY HOOK	7865	03	MONMOUTH	40 28	74 0W	10	20	20		C
SEABROOK FARMS	7936	02	CUMBERLAND	39 29	75 13W	90	08	08		C
SOMERDALE 4 SW	8173	02	CAMDEN	39 50	75 3W	55	07	07		C
SUSSEX 2 NW	8644	01	SUSSEX	41 13	74 40W	649	07	07		C
TOMS RIVER	8816	02	OCEAN	39 57	74 13W	100	24	24		C
WERTSVILLE 4 NE	9363	01	HUNTERDON	40 27	74 48W	240	07	07		C
WOODCLIFF LAKE	9832	01	BERGEN	41 1	74 3W	103		24		C



CLIMATOLOGICAL DATA

NEW JERSEY



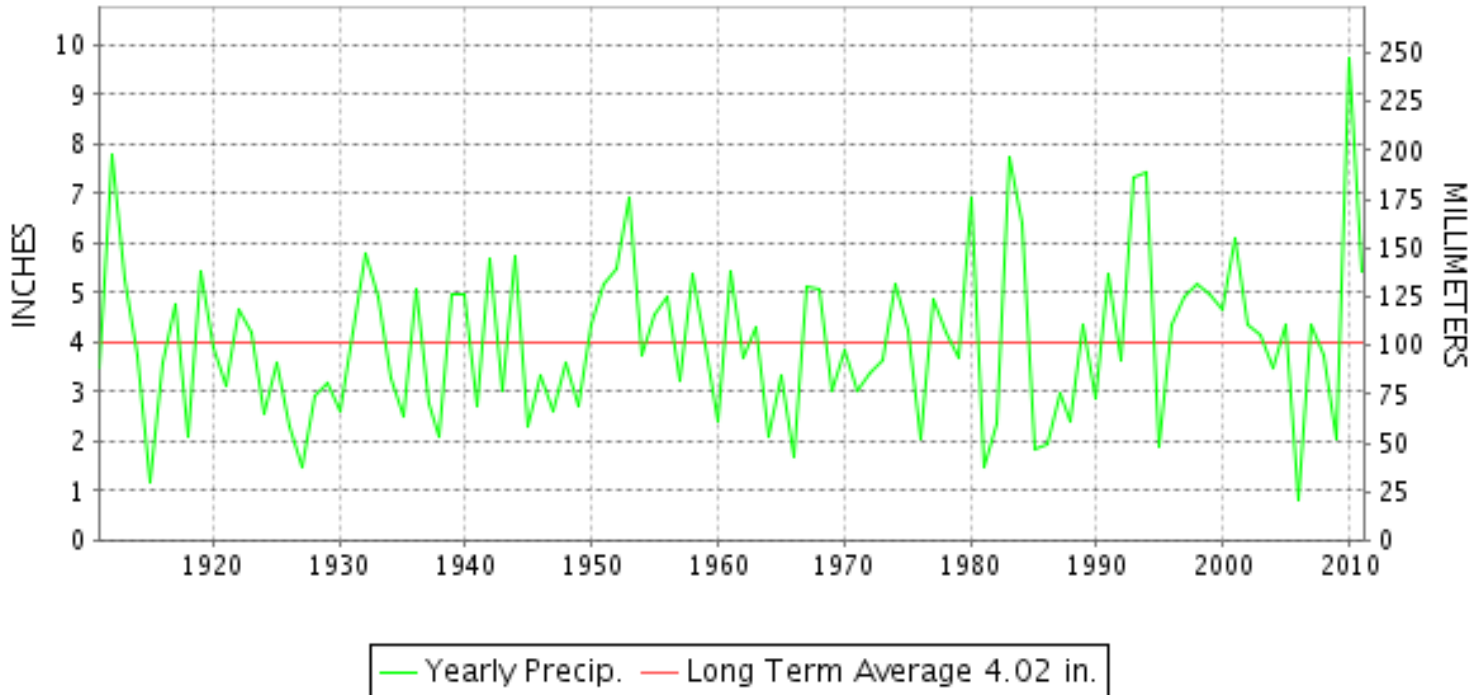
MARCH 2011

VOLUME 116 NUMBER 03

ISSN 0364-5614

GHCND Ver: 2.80-upd-2011111606

MARCH PRECIPITATION BY YEAR



TEMPERATURE AND PRECIPITATION EXTREMES

NEW JERSEY

HIGHEST TEMPERATURE	80	MARCH 18+	2 STATIONS
LOWEST TEMPERATURE	14	MARCH 04++	2 STATIONS
GREATEST TOTAL PRECIPITATION	10.67		CHARLOTTEBURG RESERVE
LEAST TOTAL PRECIPITATION	3.61		CAPE MAY 2 NW
GREATEST 1 DAY PRECIPITATION	5.05	MARCH 11	CHARLOTTEBURG RESERVE
GREATEST TOTAL SNOWFALL	6.0		POTTERSVILLE 2 NNW
GREATEST DEPTH OF SNOW OR ICE	6		SUSSEX 2 NW

"I certify that this is an official publication of the National Oceanic and Atmospheric Administration (NOAA) It is compiled using information from weather observing sites supervised by NOAA/National Weather Service and received at the National Climatic Data Center(NCDC), Asheville, North Carolina 28801."

Director
National Climatic Data Center

noaa

National
Oceanic and
Atmospheric Administration

National
Environmental Satellite, Data
and Information Service

National
Climatic Data Center
Asheville, North Carolina

MONTHLY STATION AND DIVISION SUMMARY

STATION	TEMPERATURE (°F)											PRECIPITATION (IN)												
	AVERAGE MAXIMUM	AVERAGE MINIMUM	AVERAGE	DEPARTURE FROM NORMAL	HIGHEST	DATE	LOWEST	DATE	HEATING DEG. DAYS	COOLING DEG. DAYS	NO. OF DAYS				TOTAL	DEPARTURE FROM NORMAL	GREATEST 24 HOURS	DATE	ICE PELLETS, SNOW			NO. OF DAYS		
											MAX		MIN						TOTAL	MAX DEPTH ON GROUND	DATE	.10 OR MORE	.50 OR MORE	1.00 OR MORE
											>=90	<=32	<=32	<=0										
TOMS RIVER --DIVISIONAL DATA-----> COASTAL 03	50.1M	31.8M	41.0M	0.0	77	18	20	03	665	0	0	0	17	0	M 2.77	0.75	1.27	10				4	3	1
ATLANTIC CITY	49.1	37.6	43.4	0.1	74	18	24	03	664	0	0	0	8	0	3.94	0.15	0.78	16				7	5	0
BRANT BEACH BECH HAVEN	48.3M	34.4M	41.4M		58	01	22	04+	698	0	0	0	11	0	M 4.04	1.00	1.00	07				7	4	1
CAPE MAY 2 NW	51.4	36.1	43.8	1.0	76	18	23	03	651	0	0	0	11	0	3.61	-0.57	0.89	10	T	0		8	3	0
SANDY HOOK --DIVISIONAL DATA----->	M	M	M	0.9											M	-0.25								
			42.9												3.78									

NEW JERSEY
201103

DAILY PRECIPITATION (INCHES)

STATION	TOTAL	DAY OF MONTH																																	
		01	02	03	04	05	06	07	08	09	10	11	12	13	14	15	16	17	18	19	20	21	22	23	24	25	26	27	28	29	30	31			
NEW JERSEY																																			
NORTHERN 01																																			
BELVIDERE BRG	M 5.35					T	0.09	1.94			0.29	1.61	T			0.34						0.53	0.23	0.32	-		-	-							
BOUND BROOK 2W	6.08	0.21					0.20	2.15			0.11	1.49				0.50	0.02					0.40	0.01	0.46	0.53								T		
CANISTEAR RSVR	M	-	-	-	-	-	-	-	-	-	-	-	-	-	-	-	-	-	-	-	-	-	-	-	-	-	-	-	-	-	-	-	-	-	
CANOE BROOK	M	-	-	-	-	-	-	-	-	-	-	-	-	-	-	-	-	-	-	-	-	-	-	-	-	-	-	-	-	-	-	-	-	-	
CHARLOTTEBURG RESERVE	10.67	0.20						3.07			0.32	5.05				0.38	0.17					0.24	0.32	0.33	0.56								0.03		
CRANFORD	6.80	0.12				T	0.09	2.46			0.06	2.29				0.47						0.25	0.14	0.36	0.55								0.01		
ESSEX FIELDS SVC BLDG	M	-	-	-	-	-	-	-	-	-	-	-	-	-	-	-	-	-	-	-	-	-	-	-	-	-	-	-	-	-	-	-	-	-	
FLEMINGTON 5 NNW	7.81	0.16				T	0.20	2.53			0.57	2.14				T	0.45	0.19				0.51	0.06	0.36	0.62								0.02		
GREENWOOD LAKE	M	-	-	-	-	-	-	-	-	-	-	-	-	-	-	-	-	-	-	-	-	-	-	-	-	-	-	-	-	-	-	-	-	-	
HARRISON	6.50					0.01	2.08	0.13			1.06	0.94				0.55						0.55		0.91	0.17								0.10		
LAMBERTVILLE	4.44	0.02					0.12	2.22			0.30					0.52						0.37	0.08	0.17	0.57	0.02							0.05		
LITTLE FALLS	M	-	-	-	-	-	-	-	-	-	-	-	-	-	-	-	-	-	-	-	-	-	-	-	-	-	-	-	-	-	-	-	-	-	
MIDLAND PARK	M	-	-	-	-	-	-	-	-	-	-	-	-	-	-	-	-	-	-	-	-	-	-	-	-	-	-	-	-	-	-	-	-	-	-
NEWARK INTL AP R	5.84					T	1.89	0.08		0.01	1.00	0.82				T	0.58					0.43		0.89	0.06								T	0.08	
NEW MILFORD R	6.90						2.49	0.31			1.76	0.97					0.41					0.43		0.37	0.07								0.09		
OAK RIDGE RSVR	M	-	-	-	-	-	-	-	-	-	-	-	-	-	-	-	-	-	-	-	-	-	-	-	-	-	-	-	-	-	-	-	-	-	-
PLAINFIELD	M 3.56	-	-	-	-	0.01	2.10	-	-	-	-	-	-	-	-	-	-	-	-	-	-	-	-	-	1.10	0.35	-	-	-	-	-	-	-	-	
POTTERSVILLE 2 NNW	7.83	0.21					0.02	3.05			0.42	1.98	T			0.46	0.13					0.25	0.28	0.47	0.56								T		
RINGWOOD	8.41							3.35			0.34	3.32				0.47						0.29	0.18	0.15	0.27								0.04		
SUSSEX 2 NW	FM 5.84	0.53					0.13	2.44			0.28	1.47				-	0.00 ^L	0.00 ^L	0.00 ^L	0.33 ^L		0.15	0.34	0.17	0.33										
WERTSVILLE 4 NE	6.07	0.22					0.02	2.05			0.13	1.74				0.45	0.12					0.21	0.28	0.33	0.47								0.05		
WOODCLIFF LAKE R	7.65						2.85	0.40			1.97	1.06				0.36						0.45		0.38	0.06								0.12		
SOUTHERN 02																																			
ATLANTIC CITY INTL AP	M 4.80	0.02	0.03			0.01	1.19	-	0.03	-	0.73	0.49	0.01	0.01	0.02	0.02	0.74	0.02		0.02		0.32	0.01	0.63	0.03	0.03	0.03				0.01	0.01	0.39		
ESTELL MANOR	5.29	0.62						1.45			T	1.26				0.77						0.04	0.29	0.03	0.79	T							0.04		
FREEHOLD-MARLBORO	5.30					T	1.86				T	1.82				0.52						0.15	0.18	0.25	0.50								0.02		
HAMMONTON 1 NE	5.59	0.42						1.42				1.30					0.64					0.28	0.95	0.01	0.47	0.05							0.05		
HIGHTSTOWN 2 W	5.33	0.06					0.02	2.13			0.03	1.47				0.63	0.02					0.29	0.07	0.16	0.41	T							0.04		
INDIAN MILLS 2 W	3.75						0.74				0.18	1.31				0.61						0.41		0.09	0.31								0.10		
MAYS LANDING 1 W	4.32						1.19				0.82	0.49				0.73						0.33		0.71									0.05		
MILLVILLE MUNI AP	5.14						2.07	0.02		T	1.05	0.29				T	0.67					0.22		0.58	0.01		T						T		
MOORESTOWN	4.91	0.07					0.40	1.30			0.50	1.12				0.72						0.40		0.17	0.18									0.05	
NEW BRUNSWICK 3 SE	M 5.68	0.09				T	T	2.12			0.01	1.69				0.57	T					0.20	0.16	0.37	0.47	T							-		
SEABROOK FARMS	5.15	0.37						1.31				1.53				0.81						0.12	0.19	0.04	0.74	0.01							0.03		
SOMERDALE 4 SW	5.11	0.22					0.08	1.81			0.02	1.32				0.65						0.37	0.18	0.02	0.38	T							0.06		
TOMS RIVER	M 2.77					-	-				1.27												0.40		0.60			-						0.50	
COASTAL 03																																			
ATLANTIC CITY	3.94						0.73	0.03			0.53	0.51					0.78						0.26		0.73	0.09							0.01	0.27	
BRANT BEACH BECH HAVEN	M 4.04	0.16						1.00				0.95					0.76					0.25	0.40		0.52										
CAPE MAY 2 NW	3.61						0.78	0.04			0.89	0.28					0.43						0.24		0.55	0.10							0.04	0.26	

NEW JERSEY
201103

DAILY PRECIPITATION (INCHES)

STATION	TOTAL	DAY OF MONTH																															
		01	02	03	04	05	06	07	08	09	10	11	12	13	14	15	16	17	18	19	20	21	22	23	24	25	26	27	28	29	30	31	
SANDY HOOK	M 5.35					-	*	2.00 _a				1.65	-	-			-	0.55		-	-	0.25		T	0.75		-		-	-	-	-	0.15

NEW JERSEY
201103

DAILY TEMPERATURES (°F)

STATION	OB. TIME	MAX/MIN	DAY OF MONTH																															AVERAGE	
			01	02	03	04	05	06	07	08	09	10	11	12	13	14	15	16	17	18	19	20	21	22	23	24	25	26	27	28	29	30	31		
NEW BRUNSWICK 3 SE	07	MIN	25	27	21	22	37	51	33	23	27	39	45	39	37	30	28	39	38	46	31	20	34	39	33	37	26	22	29	27	27	29	29	37	32.2
		MAX	62	48	56	37	46	64	59	49	50	42	54	57	56	53	47	51	59	66	80	55	53	47	53	36	44	43	41	45	47	51			51.7
SEABROOK FARMS	08	MIN	32	29	19	21	22	40	33	26	28	35	41	29	36	33	25	38	41	47	46	30	34	34	32	30	27	24	27	25	28	27		31.3	
		MAX	69	47	58	36	52	60	58	50	51	55	58	54	57	56	49	52	59	64	76	57	50	62	56	42	41	44	43	46	46	51	49	53.2	
SOMERDALE 4 SW	07	MIN	33	32	22	23	32	44	34	31	31	38	45	39	42	33	31	31	44	45	51	33	38	42	39	34	28	27	31	28	29	30	37	34.7	
		MAX	62	46	55	36	49	63	58	47	50	46	54	52	54	52	46	53	56	63	74	55	53	57	52	38	39	45	42	46	47	50	53	51.4	
TOMS RIVER	24	MIN	29	25	18	20	26	48	31	25	26	34	43	36	34	26	24	25	39	40	44	29	31	34	36	31	24	21	26	24	25	24	27	29.8	
		MAX	48	56	35	42			50	44	44	52	56	59	54	47	49	56	67	77	57	46	56	54	39	42	44		45	45	50	47	41	50.1	
COASTAL 03 ATLANTIC CITY	24	MIN	28	25	20	21			30	28	28	44	38	38	32	29	27	41	43	46	36	30	38	35	35	28	26		28	25	27	26	37	31.8	
		MAX	47	55	39	43	52	52	52	39	43	51	54	50	55	46	43	57	56	74	65	43	53	54	46	41	44	42	45	45	50	43	42	49.1	
BRANT BEACH BECH HAVEN	07	MIN	34	34	24	31	42	48	36	32	39	42	43	41	42	37	35	43	46	48	40	35	42	45	40	35	30	30	32	29	32	39	40	37.6	
		MAX	58	42	54	34	45	50	51	47	39	45	51	57	56	53	47	48	56	57		56	46	52	54	39	40	46	42	45	44	49	46	48.3	
CAPE MAY 2 NW	24	MIN	33	33	22	22	32	44	34	30	32	38	43	40	41	37	35	36	45	45		34	35	41	37	36	29	28	28	27	28	32	36	34.4	
		MAX	46	57	37	46	53	54	49	46	48	52	54	58	58	52	51	56	63	76	64	49	60	58	46	43	44	44	46	45	51	45	43	51.4	
SANDY HOOK	20	MIN	31	30	23	26	42	45	37	31	36	44	42	42	41	36	29	43	44	42	40	33	42	42	40	35	30	28	32	29	34	31	39	36.1	
		MAX	64	45	54	33			59	47	47	42	49			58	45		45	61			55	45	51	37	44		44			49	M		
		MIN	34	32	21	21			32	29	31	36	41			37	29		30	42			40	38	32	32	29		29			28	M		

NEW JERSEY
201103

DAILY SOIL TEMPERATURES

STATION	DEPTH	TIME	DAY OF MONTH																															AVERAGE
			01	02	03	04	05	06	07	08	09	10	11	12	13	14	15	16	17	18	19	20	21	22	23	24	25	26	27	28	29	30	31	
NEW JERSEY																																		
SOUTHERN 02																																		
NEW BRUNSWICK 3 SE (IN)																																		
BARE GROUND	2	MAX	46	46	42	38	41	49	48	53	50	40	45	54	43	49	49	48	51	57	60	-	55	44	55	38	45	41	51	51	50	53	-	48.0
	2	MIN	37	34	29	31	33	38	45	36	33	34	39	43	37	40	36	40	41	45	48	-	37	39	36	37	36	36	35	32	34	33	-	37.0
BARE GROUND	4	MAX	46	44	42	39	42	48	48	53	48	41	47	54	40 ^I	47	49	47	51	57	56	-	55	46	55	43	45	38	49	50	49	53	-	47.9
	4	MIN	38	36	36	33	36	39	44	36	35	37	41	45 ^I	38	40	40	39	45	45	50	-	41	44	44	39	38	35	35	36	36	35	-	39.0
BARE GROUND	8	MAX	43	42	42	41	40	44	45	48	45	41	45	49	40 ^I	46	45	42	45	49	52	-	52	46	49	44	43	39	45	44	45	47	-	44.9
	8	MIN	39	37	36	36	35	36	41	39	38	37	37	43	37	42	40	38	41	42	50	-	43	39	42	39	38	36	37	37	38	36	-	38.9
SOD	4	MAX	40	40	39	37	37	40	45	46	42	42	43	46	46	47	44	42	44	46 ^I	55	-	41 ^I	45	46	46	42	40	43	42	42	43	-	43.1
	4	MIN	38	38	37	36	36	49 ^I	41	42	40	40	40	43	43	41	40	40	41	42	50 ^I	-	39	43 ^I	43	41	40	37	39	39	39	40	-	39.8
SOD	8	MAX	41	41	39	38	39	42	45	47	42	40	45	46	44	45	44	41	43	46 ^I	52	-	49	46	48	44	41	40	45	44	44	45	-	43.6
	8	MIN	37	38	36	35	34	48 ^I	40	41	38	40	38	43	40	42	40	39	42	42	50 ^I	-	40	44	38	39	40	36	37	37	34	38	-	38.8

NEW JERSEY
201103

SOILS REFERENCE NOTES

STATION
NEW BRUNSWICK 3 SE

SOIL TYPE
LOAM

SOIL COVER
BARE GROUND

SLOPE
4

UNITS
F

SNOWFALL AND SNOW ON GROUND (INCHES)

STATION		DAY OF MONTH																																	
		01	02	03	04	05	06	07	08	09	10	11	12	13	14	15	16	17	18	19	20	21	22	23	24	25	26	27	28	29	30	31			
NEW JERSEY NORTHERN 01																																			
BELVIDERE BRG	SNOWFALL	-	-	-	-	-	-	-	-	-	-	-	-	-	-	-	-	-	-	-	-	0.8	0.2	0.3	-	-	-	-	-	-	-	-			
	SN ON GND	-	-	-	-	-	-	-	-	-	-	-	-	-	-	-	-	-	-	-	-	1		3	-	-	-	-	-	-	-	-			
BOUND BROOK 2W	SNOWFALL																						1.0												
	SN ON GND																						1	T											
CHARLOTTEBURG RESERVE CRANFORD	SNOWFALL	-	-	-	-	-	-	-	-	-	-	-	-	-	-	-	-	-	-	-	-	-	2.0	-	-	-	-	-	-	-	-	-			
	SNOWFALL	-	-	-	-	-	-	-	-	-	-	-	-	-	-	-	-	-	-	-	-	0.4		3.7	1.8	-	-	-	-	-	-	-			
	SN ON GND	-	-	-	-	-	-	-	-	-	-	-	-	-	-	-	-	-	-	-	-	T		4	2	-	-	-	-	-	-	-			
FLEMINGTON 5 NNW	SNOWFALL	-	-	-	-	-	-	-	-	-	-	-	-	-	-	-	-	-	-	-	-	1.3	-	1.6	0.5	-	-	-	-	-	-	-			
	SN ON GND	-	-	-	-	-	-	-	-	-	-	-	-	-	-	-	-	-	-	-	-	1		2	-	-	-	-	-	-	-	-			
HARRISON	SNOWFALL																					T		1.0	1.0										
	SN ON GND																							1	T								T		
NEWARK INTL AP R	SNOWFALL														T								T		1.6	0.6									
	SN ON GND																							1	1										
POTTERSVILLE 2 NNW	SNOWFALL																						1.1	1.0	2.5	1.4									
	SN ON GND																						1	T	3	2	T								
RINGWOOD	SNOWFALL	-	-	-	-	-	-	-	-	-	-	-	-	-	-	-	-	-	-	-	-	1.0	-	0.5	0.4	-	-	-	-	-	-	-			
SUSSEX 2 NW	SNOWFALL																						0.9		1.7	2.4									
	SN ON GND	6	6	3	3	2																1		2	4										
	WTR EQUIV	-	-	-	-	-	-	-	-	-	-	-	-	-	-	-	-	-	-	-	-	-	-	-	-	-	-	-	-	-	-	-	-		
WERTSVILLE 4 NE	SNOWFALL	-	-	-	-	-	-	-	-	-	-	-	-	-	-	-	-	-	-	-	-	-	0.1	2.9	0.3	-	-	-	-	-	-	-			
	SN ON GND	-	-	-	-	-	-	-	-	-	-	-	-	-	-	-	-	-	-	-	-	-		3											
SOUTHERN 02																																			
ATLANTIC CITY INTL AP	SNOWFALL																									T									
	SN ON GND																																		
ESTELL MANOR	SNOWFALL	-	-	-	-	-	-	-	-	-	-	-	-	-	-	-	-	-	-	-	-	-	-	-	-	T	T	-	-	-	-	-	-		
	SN ON GND	-	-	-	-	-	-	-	-	-	-	-	-	-	-	-	-	-	-	-	-	-	-	-	-	T		-	-	-	-	-	-	-	
FREEHOLD-MARLBORO	SNOWFALL	-	-	-	-	-	-	-	-	-	-	-	-	-	-	-	-	-	-	-	-	-	-	-	T	-	-	-	-	-	-	-	-		
	SN ON GND	-	-	-	-	-	-	-	-	-	-	-	-	-	-	-	-	-	-	-	-	-	-	-	T		-	-	-	-	-	-	-	-	
HIGHTSTOWN 2 W	SNOWFALL	-	-	-	-	-	-	-	-	-	-	-	-	-	-	-	-	-	-	-	-	-	-	0.5	T	T	-	-	-	-	-	-	-		
	SN ON GND	-	-	-	-	-	-	-	-	-	-	-	-	-	-	-	-	-	-	-	-	-	-	T	T		-	-	-	-	-	-	-	-	
NEW BRUNSWICK 3 SE	SNOWFALL																							1.0	0.5										
	SN ON GND																							1	1										
	WTR EQUIV																							0.40	-	-	-	-	-	-	-	-	-	-	
SOMERDALE 4 SW	SNOWFALL	-	-	-	-	-	-	-	-	-	-	-	-	-	-	-	-	-	-	-	-	-	-	-	-	T	T	-	-	-	-	-	-		
	SN ON GND	-	-	-	-	-	-	-	-	-	-	-	-	-	-	-	-	-	-	-	-	-	-	-	-										
COASTAL 03																																			
CAPE MAY 2 NW	SNOWFALL																										T								
	SN ON GND																																		

Snowfall: Includes snow and ice. Values for NWS stations (J index note) are Mid-Mid (LST).

Snow on ground: Includes snow, sleet, ice, and hail. Values for NWS stations (J index note) are observed at 12 UTC (GMT).

Water Equivalent: Given for NWS stations (J index note) only, when snow depth is 2 inches or more, and is measured at 18 UTC (GMT)

STATION INDEX

STATION	INDEX NO.	DIVISION	COUNTY	LATITUDE	LONGITUDE	ELEVATION (IN FEET)	OBSERVATION TIME AND TABLES			
							LOCAL STD TIME			
							TEMP	PRECIP	EVAP	SPECIAL SEE (NOTES)
NEW JERSEY										
ATLANTIC CITY	0325	03	ATLANTIC	39 23	74 25W	10	24	24		C
ATLANTIC CITY INTL AP	0311	02	ATLANTIC	39 27	74 34W	60	24	24		C
BELVIDERE BRG	0734	01	WARREN	40 50	75 5W	263	07	07		C
BOUND BROOK 2W	0927	01	SOMERSET	40 34	74 35W	50		07		C
BRANT BEACH BECH HAVEN	0990	03	OCEAN	39 34	74 15W	5	07	07		C
CANISTEAR RSVR	1327	01	SUSSEX	41 7	74 29W	1100		08		C
CANOE BROOK	1335	01	ESSEX	40 45	74 21W	180	08	08	08	C
CAPE MAY 2 NW	1351	03	CAPE MAY	38 57	74 56W	20	24	24		C
CHARLOTTEBURG RESERVE	1582	01	PASSAIC	41 2	74 25W	760	07	07		C
CRANFORD	2023	01	UNION	40 40	74 19W	75	08	08		C
ESSEX FELS SVC BLDG	2768	01	ESSEX	40 50	74 17W	350	08	08		C
ESTELL MANOR	2805	02	ATLANTIC	39 23	74 50W	85	08	08		C
FLEMINGTON 5 NNW	3029	01	HUNTERDON	40 34	74 53W	260	07	07		C
FREEHOLD-MARLBORO	3181	02	MONMOUTH	40 19	74 15W	194	07	07		C
GREENWOOD LAKE	3516	01	PASSAIC	41 8	74 19W	470		07		C
HAMMONTON 1 NE	3662	02	ATLANTIC	39 39	74 48W	90	07	07		C
HARRISON	3704	01	HUDSON	40 45	74 9W	24	24	24		C
HIGHTSTOWN 2 W	3951	02	MERCER	40 16	74 34W	100	07	07		C
INDIAN MILLS 2 W	4229	02	BURLINGTON	39 49	74 47W	100	17	17		C
LAMBERTVILLE	4635	01	HUNTERDON	40 22	74 57W	68		09		C
LITTLE FALLS	4887	01	PASSAIC	40 53	74 14W	150	08	08		C
MAYS LANDING 1 W	5346	02	ATLANTIC	39 27	74 45W	20		09		C
MIDLAND PARK	5503	01	BERGEN	40 60	74 9W	210		08		C
MILLVILLE MUNI AP	5581	02	CUMBERLAND	39 22	75 5W	70	24	24		C
MOORESTOWN	5728	02	BURLINGTON	39 57	74 58W	45	18	18		C
NEW BRUNSWICK 3 SE	6055	02	MIDDLESEX	40 28	74 26W	86	07	07	07	CG
NEW MILFORD	6146	01	BERGEN	40 58	74 1W	12		24		C
NEWARK INTL AP	6026	01	ESSEX	40 41	74 10W	7	24	24		C
OAK RIDGE RSVR	6460	01	MORRIS	41 0	74 30W	880		08		C
PLAINFIELD	7079	01	UNION	40 36	74 24W	90	19	19		C
POTTERSVILLE 2 NNW	7301	01	MORRIS	40 44	74 44W	365		08		C
RINGWOOD	7587	01	PASSAIC	41 6	74 16W	305		07		C
SANDY HOOK	7865	03	MONMOUTH	40 28	74 0W	10	20	20		C
SEABROOK FARMS	7936	02	CUMBERLAND	39 29	75 13W	90	08	08		C
SOMERDALE 4 SW	8173	02	CAMDEN	39 50	75 3W	55	07	07		C
SUSSEX 2 NW	8644	01	SUSSEX	41 13	74 40W	649	07	07		C
TOMS RIVER	8816	02	OCEAN	39 57	74 13W	100	24	24		C
WERTSVILLE 4 NE	9363	01	HUNTERDON	40 27	74 48W	240	07	07		C
WOODCLIFF LAKE	9832	01	BERGEN	41 1	74 3W	103		24		C



CLIMATOLOGICAL DATA

NEW JERSEY



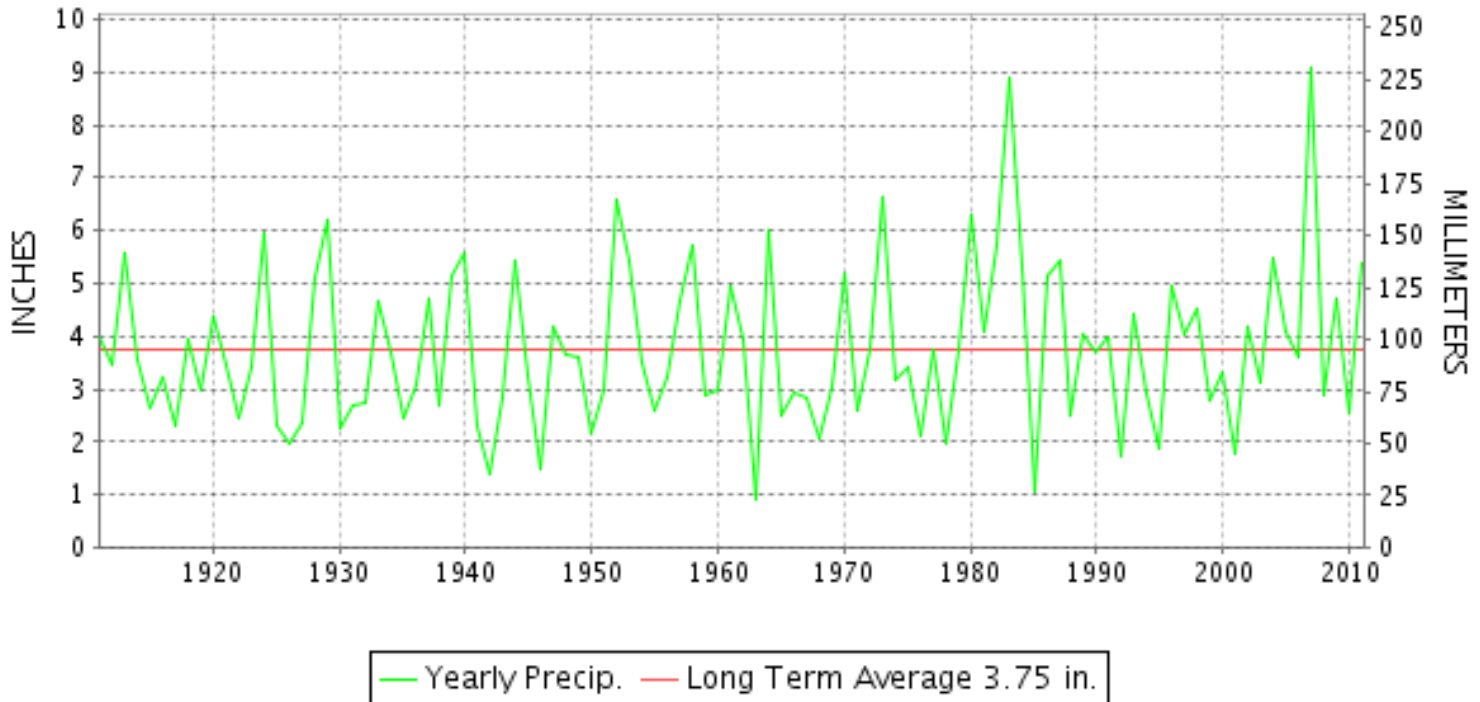
APRIL 2011

VOLUME 116 NUMBER 04

ISSN 0364-5614

GHCND Ver: 2.80-upd-2011111606

APRIL PRECIPITATION BY YEAR



TEMPERATURE AND PRECIPITATION EXTREMES

NEW JERSEY

HIGHEST TEMPERATURE	88	APRIL 26	HAMMONTON 1 NE
LOWEST TEMPERATURE	24	APRIL 16	MOORESTOWN
GREATEST TOTAL PRECIPITATION	8.33		FLEMINGTON 5 NNW
LEAST TOTAL PRECIPITATION	3.55		CAPE MAY 2 NW
GREATEST 1 DAY PRECIPITATION	3.44	APRIL 17	RINGWOOD
GREATEST TOTAL SNOWFALL	0.4		SUSSEX 2 NW

"I certify that this is an official publication of the National Oceanic and Atmospheric Administration (NOAA) It is compiled using information from weather observing sites supervised by NOAA/National Weather Service and received at the National Climatic Data Center(NCDC), Asheville, North Carolina 28801."

Director
National Climatic Data Center

noaa

National
Oceanic and
Atmospheric Administration

National
Environmental Satellite, Data
and Information Service

National
Climatic Data Center
Asheville, North Carolina

MONTHLY STATION AND DIVISION SUMMARY

STATION	TEMPERATURE (°F)										PRECIPITATION (IN)													
	AVERAGE MAXIMUM	AVERAGE MINIMUM	AVERAGE	DEPARTURE FROM NORMAL	HIGHEST	DATE	LOWEST	DATE	HEATING DEG. DAYS	COOLING DEG. DAYS	NO. OF DAYS				TOTAL	DEPARTURE FROM NORMAL	GREATEST 24 HOURS	DATE	ICE PELLETS, SNOW			NO. OF DAYS		
											MAX		MIN						TOTAL	MAX DEPTH ON GROUND	DATE	.10 OR MORE	.50 OR MORE	1.00 OR MORE
											>=90	<=32	<=32	<=0										
TOMS RIVER	63.3M	43.1MF	53.2MF		83	11	31	06	351	25	0	0	3	0	4.71	0.69	2.50	16				4	2	2
--DIVISIONAL DATA----->			55.0	3.7										5.40	1.63									
COASTAL 03																								
ATLANTIC CITY	58.0	47.7M	52.9M		71	25+	38	01	341	0	0	0	0	4.34	1.09	1.18	16				9	5	1	
BRANT BEACH BECH HAVEN	57.4	44.9	51.2		73	26	36	02	404	0	0	0	0	3.73		0.86	13				7	4	0	
CAPE MAY 2 NW	63.3	47.2	55.3	3.8	81	20	38	01	288	4	0	0	0	3.55	0.24	1.21	28	0.0	0		7	2	1	
SANDY HOOK	M	M	M											M										
--DIVISIONAL DATA----->			53.1	2.6										3.87	0.31									

NEW JERSEY
201104

DAILY PRECIPITATION (INCHES)

STATION	TOTAL	DAY OF MONTH																															
		01	02	03	04	05	06	07	08	09	10	11	12	13	14	15	16	17	18	19	20	21	22	23	24	25	26	27	28	29	30	31	
NEW JERSEY																																	
NORTHERN 01																																	
BELVIDERE BRG	M 5.13	-		T	0.28	0.22	0.33		0.12			T	1.09	0.14		1.38	T		0.16	-		0.20	0.34	0.02		0.20	-	0.65					
BOUND BROOK 2W	6.50	0.06	0.21	0.03	T	0.14	0.07		0.24				1.11	0.02		2.46			0.06	-		0.71	0.08	0.82	0.02	0.02	0.11	0.32	0.02				
CANISTEAR RSVR	0.00	-	-	-	-	-	-	-	-	-	-	-	-	-	-	-	-	-	-	-	-	-	-	-	-	-	-	-	-	-	-	-	-
CANOE BROOK	6.79	0.11	0.17			0.15			0.21				1.16	0.03		3.20			0.11			0.41	0.42	0.38	0.01	0.03	T	0.40					
CHARLOTTEBURG RESERVE	M 8.37	0.23	0.30	0.23	0.10	0.14	0.39	0.02	-			0.02	1.10	0.10		3.25	0.07		0.11			0.45	0.78	0.18	T	0.03	0.30	0.57					
CRANFORD	6.52	0.11	0.13	0.03	T	0.09	0.08		0.10		T	0.10	1.07	0.02		2.51			0.12			0.69	0.12	0.97	0.01	T		0.37					
ESSEX FIELDS SVC BLDG	0.00	-	-	-	-	-	-	-	-	-	-	-	-	-	-	-	-	-	-	-	-	-	-	-	-	-	-	-	-	-	-	-	-
FLEMINGTON 5 NNW	8.33	0.12	0.24	0.04	0.03	0.16	0.14		0.37			0.03	1.66	0.10		2.47			T	0.19		0.46	0.35	1.07		0.19	0.07	0.64					
GREENWOOD LAKE	0.00	-	-	-	-	-	-	-	-	-	-	-	-	-	-	-	-	-	-	-	-	-	-	-	-	-	-	-	-	-	-	-	-
HARRISON	5.92	0.21		0.06	0.27	0.08	0.03	0.02			T	0.79	0.48		1.82	0.50	T	0.06	T			0.81	0.43	T		T	0.36	T					
LAMBERTVILLE	M 5.45	0.27	0.12		0.06						0.56	0.02	1.05	0.07		0.05	1.80	0.09		0.09		0.32	0.35	0.60									
LITTLE FALLS	0.00	-	-	-	-	-	-	-	-	-	-	-	-	-	-	-	-	-	-	-	-	-	-	-	-	-	-	-	-	-	-	-	-
MIDLAND PARK	M 1.52	-	-	-	-	-	-	-	-	-	-	-	-	-	-	-	-	-	-	-	-	-	-	0.60	-	-	-	-	0.92	-			
NEWARK INTL AP R	5.86	0.15		0.01	0.04	0.10	0.06	0.01	0.04		0.03	0.79	0.30		2.39	0.13	T	0.02	T		T	0.87	0.59	T		T	0.33	T					
NEW MILFORD R	6.89	0.15		0.08	0.18	0.08	0.09					0.96	0.67		2.11	0.57		0.07				0.82	0.22			0.02	0.87						
OAK RIDGE RSVR	0.00	-	-	-	-	-	-	-	-	-	-	-	-	-	-	-	-	-	-	-	-	-	-	-	-	-	-	-	-	-	-	-	-
PLAINFIELD	M 3.98	0.26	-	-	0.07	0.21	0.11	-	0.17	-	-	0.03	1.03	-	-	-	-	-	0.06	-	-	0.92	0.61	-	-	0.01	-	0.50	-				
POTTERSVILLE 2 NNW	7.13	0.09	0.16		0.06	0.18	0.25		0.10		T	0.02	1.24	0.05		2.76			0.13			0.34	0.59	0.18		0.32	0.03	0.63					
RINGWOOD	7.59	0.30		0.11	0.07	0.17	0.10	0.30				0.14	1.30	0.05		3.44	0.10	0.03	0.12			0.65	0.09			T	0.62	T					
SUSSEX 2 NW	M 5.62	0.19	0.20		0.17	* 0.43 _a	0.35	0.01				0.19	0.91	0.08		1.47	0.07	T	0.21			0.60	0.06	0.01		0.03	0.13	0.51					
WERTSVILLE 4 NE	7.49	0.15	0.21		0.03	0.02	0.22	0.06		0.50		0.02	1.03	0.07		3.10			0.11			0.27	0.65	0.59			0.09	0.37					
WOODCLIFF LAKE R	7.18	0.10		0.07	0.12	0.09	0.11				0.03	1.01	0.63		2.76	0.56		0.05			0.83	0.12				0.70							
SOUTHERN 02																																	
ATLANTIC CITY INTL AP	M 2.74	0.16	0.02	-	0.01	-	0.03	0.01	0.61	-	0.02	0.02	-	0.03	0.03	1.07	-	0.03	-	0.02		-	0.36	0.29	-		-	0.02	0.01				
ESTELL MANOR	4.85	0.45	0.03	T	0.03	0.12	0.08		T	0.70			0.71	0.02		1.33			0.01			0.31	0.04	0.51			0.51						
FREEHOLD-MARLBORO	M 4.37	0.20	0.10		T	0.03	0.09		-				0.82	0.02		1.87			0.02	T		0.15	0.39	0.46			0.22	T					
HAMMONTON 1 NE	F 2.85	0.28	0.15		0.02	0.12		0.00 ^L	0.69 ^L	0.03			1.22	0.13		0.00 ^L	1.83 ^L					0.20	0.23	0.34	0.06		0.01	0.06					
HIGHTSTOWN 2 W	M 6.84	0.05	-		0.42	0.01		0.57					1.74	0.03		2.74			0.02			0.17	0.39	0.48			0.02	0.20					
INDIAN MILLS 2 W	5.81	0.29			0.21			0.26	0.61				0.93	0.04		0.27	1.82					0.36	0.31				0.71						
MAYS LANDING 1 W	5.29	0.44						0.77				0.50	0.22		1.32	0.22						1.16	0.23			0.32							
MILLVILLE MUNI AP	4.88	0.12	T	0.01		0.06		0.64	0.02			0.97	0.04		1.77	0.03		0.04			0.07	0.23	0.40	0.21		0.09	0.17	0.01					
MOORESTOWN	M 4.66	0.32			0.50	-	-	-	-	-	-	-	0.67	0.02		0.32	2.14		T			-	0.28	0.13	0.03		-	0.20	0.05				
NEW BRUNSWICK 3 SE	7.17	0.09	0.17		0.03	0.02	0.26	0.02		0.39			T	1.05	0.01		2.70	0.01		0.03		0.29	0.75	0.62	T		0.73						
SEABROOK FARMS	4.37	0.17	0.03		0.02	0.02	0.28		0.01	0.73		0.03	0.48	0.08		1.77			0.03			0.14	0.02	0.02		0.30	0.24						
SOMERDALE 4 SW	6.08	0.20	0.15		0.03	0.23	0.42		0.75				0.82	0.06		2.56			0.05			0.21	0.16	0.24		0.04	0.16						
TOMS RIVER	4.71											1.78	0.18		2.50							0.25											
COASTAL 03																																	
ATLANTIC CITY	4.34	0.17		0.01		0.10		0.56	0.03			0.53	0.01		1.18						0.08	0.23	0.59	0.30			0.55						
BRANT BEACH BECH HAVEN	3.73	0.51				0.06		0.78					0.86	0.05		0.74						0.25	0.36					0.12					
CAPE MAY 2 NW	3.55	0.16		0.02	0.01	0.27		0.39				0.48	0.04		0.69	0.02					0.08	0.11	0.07			1.21							

NEW JERSEY
201104

DAILY PRECIPITATION (INCHES)

STATION	TOTAL	DAY OF MONTH																																	
		01	02	03	04	05	06	07	08	09	10	11	12	13	14	15	16	17	18	19	20	21	22	23	24	25	26	27	28	29	30	31			
SANDY HOOK	M 4.55	0.22	-		-	T	0.25			-	-	-		1.82	T		-	1.58						-	-	0.68	-					T		-	

NEW JERSEY
201104

DAILY TEMPERATURES (°F)

STATION	OB. TIME	MAX/MIN	DAY OF MONTH																															AVERAGE
			01	02	03	04	05	06	07	08	09	10	11	12	13	14	15	16	17	18	19	20	21	22	23	24	25	26	27	28	29	30	31	
NEW BRUNSWICK 3 SE	07	MIN	34	35	27	36	43					47		37	32	48	24	36	30	30	28	26		51	55	77	53		55	32	28		39.3	
		MAX	42	46	56	59	74	67	56	51	49	59	61	86	61	50	70	54	58	61	65	55	72	63	50	65	83	70	84	82	80	70	63.3	
SEABROOK FARMS	08	MIN	36	34	39	42	48	34	39	35	36	42	46	56	44	45	46	40	43	42	42	45	46	36	40	47	59	52	63	69	46	48	44.7	
		MAX	42	46	53	58	78	63	58	61	53	59	61	78	70	59	69	60	61	63	65	66	84	63	53	70	83	85	82	78	78	70	65.6	
SOMERDALE 4 SW	07	MIN	35	36	38	46	51	37	42	40	40	45	49	60	46	48	49	43	49	52	55	46	52	39	42	46	56	66	65	68	51	46	47.9	
		MAX	40	45	54	60	77	62	57	55	46	60	64	82	62	54	69	56	57	62	63	56	81	61	51	67	84	87	82	83	76	69	64.1	
TOMS RIVER	24	MIN	34	30	32	38	47	30	33	36	36	39	47	56	43	39	43	38	42	45	47	44	44	34	40	47	57	63	63	67	45	44	43.4	
		MAX	45	45	58	58	63	58	48	47	57	54	83	65	61	68	68	58	58	62	62		66	48	67	82	77	82	78	78	74	65	63.3	
COASTAL 03 ATLANTIC CITY	24	MIN	36	36	32	32	37	31	33	40 ¹	43	40	52 ¹	44	44	44	42	42	44	44		40	35	46	59	62 ¹	61	61	61	49	41	43.1		
		MAX	46	52	57	56	55	53	47	45	49	50	58	64	56	61	52	57	61	58	58	71	71	50	57	70	71	63	61	64	69	59	58.0	
BRANT BEACH BECH HAVEN	07	MIN	38	40	42	46	42	39		42	43	45	46	47	47	49	45	46	53	52	48	45	48	43	45	56	60	56	57	58	55	49	47.7	
		MAX	40	45	53	57	57	53	57	47	45	51	53	57	63	59	64	49	56	61	56	58	66	61	48	57	72	73	67	61	63	72	57.4	
CAPE MAY 2 NW	24	MIN	37	36	37	40	46	38	40	40	40	42	45	49	45	46	46	42	42	46	48	44	45	42	42	48	56	54	54	55	49	44.9		
		MAX	46	52	58	71	58	59	55	48	55	55	70	69	63	67	55	59	64	66	68	81	67	50	68	76	77	70	68	68	71	64	63.3	
SANDY HOOK	20	MIN	38	40	41	46	42	40	40	39	42	45	48	48	48	46	42	45	51	52	50	48	49	41	45	59	58	57	58	59	51	49	47.2	
		MAX	49		54		65	67	67	49				63	61	50	68		55	61	59	54	59			64		81	70	70	66		M	
		MIN	28		43		43	37	40	40			61	43	45	45		41	42	43	44	45			41		52	52	53	50		M		

NEW JERSEY
201104

DAILY SOIL TEMPERATURES

STATION	DEPTH	TIME	DAY OF MONTH																															AVERAGE
			01	02	03	04	05	06	07	08	09	10	11	12	13	14	15	16	17	18	19	20	21	22	23	24	25	26	27	28	29	30	31	
NEW JERSEY																																		
SOUTHERN 02																																		
NEW BRUNSWICK 3 SE (IN)																																		
BARE GROUND	2	MAX	42	43	54	56	58	55	55	49	45	62	53	68	59	50 ^I	68	57	50	63	61	51	63	66	52	52	72	72	74	78	69	71		59.2
	2	MIN	41	39	38	42	45	43	40	44	42	46	46	48	52 ^I	46	47	48	45	44	46	48	47	45	42	50	49	59	61	69	57	55		47.3
BARE GROUND	4	MAX	46	44	54	55	55	55	53	50	46	60	55	65	60	51	61	58	51	62	59	52	62	65	53	51	67	72	75	73	69	70		58.3
	4	MIN	42	40	40	41	46	43	43	45	44	45	47	50	52	49	48	49	47	47	48	49	48	48	45	50	49	61	61	66	60	56		48.6
BARE GROUND	8	MAX	43	43	48	49	52	51	49	48	48	52	50	55	58	50 ^I	58	55	50	55	56	51	56	57	51	50	61	69	65	66	64	63		54.2
	8	MIN	41	40	38	41	44	45	42	46	44	42	48	46	52 ^I	50	47	50	47	48	47	49	49	50	49	50	48	57	56	61	61	57		48.0
SOD	4	MAX	43	42	45	45	47	48	46	41 ^I	46	48	48	53	54	51	53	52	52	52	52	50	52	54	50	50	57	60	61	62	62	61		51.6
	4	MIN	42	41	41	41	45	45	45 ^I	40	40	44	47	48	51	50	49	50	50	49	50	50	50	51	50	50	49	56	57	60	60	59		48.8
SOD	8	MAX	42	45	45	46	52	51	47	46	44 ^I	49	49	55	56	50	56	52	50	57	53	50	53	58	50	50	59	62	69	64	62	62		53.1
	8	MIN	42	40	39	41	40	45	43	45	43	47 ^I	47	45	51	49	48	50	48	46	49	46	48	48	50	50	49	55	54	59	60	59		47.9

NEW JERSEY
201104

SOILS REFERENCE NOTES

STATION
NEW BRUNSWICK 3 SE

SOIL TYPE
LOAM

SOIL COVER
BARE GROUND

SLOPE
4

UNITS
F

SNOWFALL AND SNOW ON GROUND (INCHES)

STATION		DAY OF MONTH																														
		01	02	03	04	05	06	07	08	09	10	11	12	13	14	15	16	17	18	19	20	21	22	23	24	25	26	27	28	29	30	31
NEW JERSEY NORTHERN 01																																
	CHARLOTTEBURG RESERVE	SNOWFALL	0.3	-	-	-	-	-	-	-	-	-	-	-	-	-	-	-	-	-	-	-	-	-	-	-	-	-	-	-	-	
	FLEMINGTON 5 NNW	SNOWFALL	-	T	-	-	-	-	-	-	-	-	-	-	-	-	-	-	-	-	-	-	-	-	-	-	-	-	-	-	-	
	SN ON GND	-		-	-	-	-	-	-	-	-	-	-	-	-	-	-	-	-	-	-	-	-	-	-	-	-	-	-	-	-	
HARRISON	SNOWFALL	T																														
	SN ON GND																															
NEWARK INTL AP R	SNOWFALL	T																														
	SN ON GND																															
POTTERSVILLE 2 NNW	SNOWFALL		T																													
	SN ON GND																															
SUSSEX 2 NW	SNOWFALL	0.4				-																										
	SN ON GND					-																										
WERTSVILLE 4 NE	SNOWFALL	-	T	-	-	-	-	-	-	-	-	-	-	-	-	-	-	-	-	-	-	-	-	-	-	-	-	-	-	-	-	
	SN ON GND	-		-	-	-	-	-	-	-	-	-	-	-	-	-	-	-	-	-	-	-	-	-	-	-	-	-	-	-	-	
SOUTHERN 02																																
ESTELL MANOR	SNOWFALL	-	T	-	-	-	-	-	-	-	-	-	-	-	-	-	-	-	-	-	-	-	-	-	-	-	-	-	-	-	-	
	SN ON GND	-		-	-	-	-	-	-	-	-	-	-	-	-	-	-	-	-	-	-	-	-	-	-	-	-	-	-	-	-	
NEW BRUNSWICK 3 SE	SNOWFALL		T																													
	SN ON GND																															
	WTR EQUIV																															
SOMERDALE 4 SW	SNOWFALL	T	T																													
	SN ON GND																															

Snowfall: Includes snow and ice. Values for NWS stations (J index note) are Mid-Mid (LST).

Snow on ground: Includes snow, sleet, ice, and hail. Values for NWS stations (J index note) are observed at 12 UTC (GMT).

Water Equivalent: Given for NWS stations (J index note) only, when snow depth is 2 inches or more, and is measured at 18 UTC (GMT)

STATION INDEX

STATION	INDEX NO.	DIVISION	COUNTY	LATITUDE	LONGITUDE	ELEVATION (IN FEET)	OBSERVATION TIME AND TABLES			
							LOCAL STD TIME			
							TEMP	PRECIP	EVAP	SPECIAL SEE (NOTES)
NEW JERSEY										
ATLANTIC CITY	0325	03	ATLANTIC	39 23	74 25W	10	24	24		C
ATLANTIC CITY INTL AP	0311	02	ATLANTIC	39 27	74 34W	60	24	24		C
BELVIDERE BRG	0734	01	WARREN	40 50	75 5W	263	07	07		C
BOUND BROOK 2W	0927	01	SOMERSET	40 34	74 35W	50		07		C
BRANT BEACH BECH HAVEN	0990	03	OCEAN	39 34	74 15W	5	07	07		C
CANISTEAR RSVR	1327	01	SUSSEX	41 7	74 29W	1100		08		C
CANOE BROOK	1335	01	ESSEX	40 45	74 21W	180	08	08	08	C
CAPE MAY 2 NW	1351	03	CAPE MAY	38 57	74 56W	20	24	24		C
CHARLOTTEBURG RESERVE	1582	01	PASSAIC	41 2	74 25W	760	07	07		C
CRANFORD	2023	01	UNION	40 40	74 19W	75	08	08		C
ESSEX FELS SVC BLDG	2768	01	ESSEX	40 50	74 17W	350	08	08		C
ESTELL MANOR	2805	02	ATLANTIC	39 23	74 50W	85	08	08		C
FLEMINGTON 5 NNW	3029	01	HUNTERDON	40 34	74 53W	260	07	07		C
FREEHOLD-MARLBORO	3181	02	MONMOUTH	40 19	74 15W	194	07	07		C
GREENWOOD LAKE	3516	01	PASSAIC	41 8	74 19W	470		07		C
HAMMONTON 1 NE	3662	02	ATLANTIC	39 39	74 48W	90	07	07		C
HARRISON	3704	01	HUDSON	40 45	74 9W	24	24	24		C
HIGHTSTOWN 2 W	3951	02	MERCER	40 16	74 34W	100	07	07		C
INDIAN MILLS 2 W	4229	02	BURLINGTON	39 49	74 47W	100	17	17		C
LAMBERTVILLE	4635	01	HUNTERDON	40 22	74 57W	68		09		C
LITTLE FALLS	4887	01	PASSAIC	40 53	74 14W	150	08	08		C
MAYS LANDING 1 W	5346	02	ATLANTIC	39 27	74 45W	20		09		C
MIDLAND PARK	5503	01	BERGEN	40 60	74 9W	210		08		C
MILLVILLE MUNI AP	5581	02	CUMBERLAND	39 22	75 5W	70	24	24		C
MOORESTOWN	5728	02	BURLINGTON	39 57	74 58W	45	18	18		C
NEW BRUNSWICK 3 SE	6055	02	MIDDLESEX	40 28	74 26W	86	07	07	07	CG
NEW MILFORD	6146	01	BERGEN	40 58	74 1W	12		24		C
NEWARK INTL AP	6026	01	ESSEX	40 41	74 10W	7	24	24		C
OAK RIDGE RSVR	6460	01	MORRIS	41 0	74 30W	880		08		C
PLAINFIELD	7079	01	UNION	40 36	74 24W	90	19	19		C
POTTERSVILLE 2 NNW	7301	01	MORRIS	40 44	74 44W	365		08		C
RINGWOOD	7587	01	PASSAIC	41 6	74 16W	305		07		C
SANDY HOOK	7865	03	MONMOUTH	40 28	74 0W	10	20	20		C
SEABROOK FARMS	7936	02	CUMBERLAND	39 29	75 13W	90	08	08		C
SOMERDALE 4 SW	8173	02	CAMDEN	39 50	75 3W	55	07	07		C
SUSSEX 2 NW	8644	01	SUSSEX	41 13	74 40W	649	07	07		C
TOMS RIVER	8816	02	OCEAN	39 57	74 13W	100	24	24		C
WERTSVILLE 4 NE	9363	01	HUNTERDON	40 27	74 48W	240	07	07		C
WOODCLIFF LAKE	9832	01	BERGEN	41 1	74 3W	103		24		C



CLIMATOLOGICAL DATA

NEW JERSEY



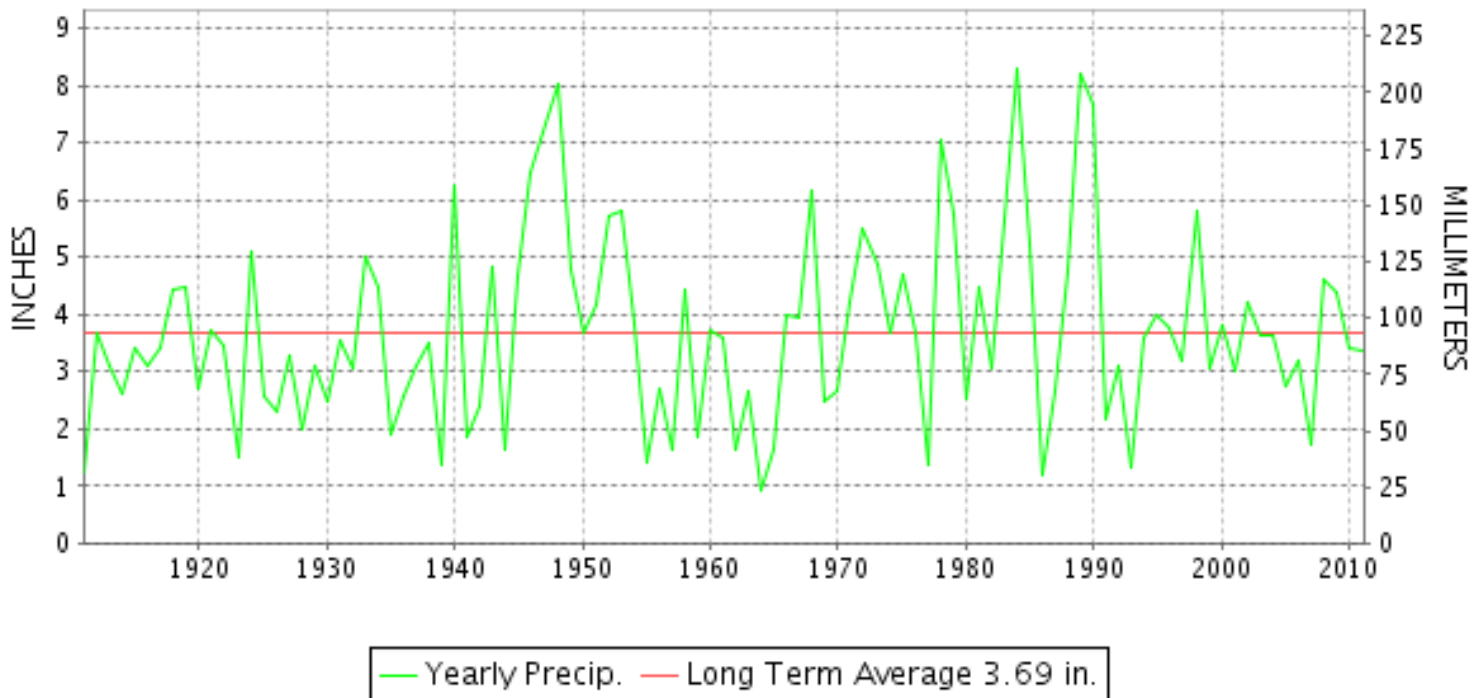
MAY 2011

VOLUME 116 NUMBER 05

ISSN 0364-5614

GHCND Ver: 2.80-upd-2011111606

MAY PRECIPITATION BY YEAR



TEMPERATURE AND PRECIPITATION EXTREMES

NEW JERSEY

HIGHEST TEMPERATURE	95	MAY 31++	2 STATIONS
LOWEST TEMPERATURE	24	MAY 06	MOORESTOWN
GREATEST TOTAL PRECIPITATION	7.39		CHARLOTTEBURG RESERVE
LEAST TOTAL PRECIPITATION	1.89		CAPE MAY 2 NW
GREATEST 1 DAY PRECIPITATION	2.35	MAY 18	HARRISON

"I certify that this is an official publication of the National Oceanic and Atmospheric Administration (NOAA) It is compiled using information from weather observing sites supervised by NOAA/National Weather Service and received at the National Climatic Data Center(NCDC), Asheville, North Carolina 28801."

Director
National Climatic Data Center

noaa

National
Oceanic and
Atmospheric Administration

National
Environmental Satellite, Data
and Information Service

National
Climatic Data Center
Asheville, North Carolina

NEW JERSEY
201105

DAILY PRECIPITATION (INCHES)

STATION	TOTAL	DAY OF MONTH																															
		01	02	03	04	05	06	07	08	09	10	11	12	13	14	15	16	17	18	19	20	21	22	23	24	25	26	27	28	29	30	31	
NEW JERSEY																																	
NORTHERN 01																																	
BELVIDERE BRG	6.20				0.26	0.20									0.34	1.74	0.09	0.25	0.46	1.05	0.09	0.13	T	0.96	0.02			0.07			0.54		
BOUND BROOK 2W	5.31				0.28	0.24	T								0.96	1.20	0.72	0.50	0.61	0.07	0.13		0.05	0.01						0.12		0.42	
CANISTEAR RSVR	M	-	-	-	-	-	-	-	-	-	-	-	-	-	-	-	-	-	-	-	-	-	-	-	-	-	-	-	-	-	-	-	
CANOE BROOK	5.04				0.07	0.30									T	0.69	0.63	0.84	1.30			0.09			0.80					T	0.32		
CHARLOTTEBURG RESERVE	7.39				0.35	0.27									0.60	0.45	1.71	1.32	1.77	0.02	0.09	0.02	0.05	0.27	T			T		0.02	0.25	0.20	
CRANFORD	3.28				0.18	0.23									0.49	0.26	0.29	0.43	0.90	0.05	0.15		0.02	0.03				T		0.25			
ESSEX FIELDS SVC BLDG	M	-	-	-	-	-	-	-	-	-	-	-	-	-	-	-	-	-	-	-	-	-	-	-	-	-	-	-	-	-	-	-	
FLEMINGTON 5 NNW	M 3.73				T	0.35	0.34								0.68	0.12	0.16	0.37	0.62	-	0.22	0.54	-	0.02							0.31		
GREENWOOD LAKE	M	-	-	-	-	-	-	-	-	-	-	-	-	-	-	-	-	-	-	-	-	-	-	-	-	-	-	-	-	-	-	-	
HARRISON	5.47				0.46			T							T	T	0.96	0.21	0.51	2.35	0.01	0.14	0.24	T	0.20				T		0.39		
LAMBERTVILLE	3.90				0.28	0.30			0.05						0.89	0.10	0.15	0.37	0.69	0.24	0.26	0.05	0.08									0.44	
LITTLE FALLS	M	-	-	-	-	-	-	-	-	-	-	-	-	-	-	-	-	-	-	-	-	-	-	-	-	-	-	-	-	-	-	-	
MIDLAND PARK	M 3.44	-	-	-	-	0.40	-	-	-	-	-	-	-	-	-	-	0.30	1.09	1.32	-	-	-	-	-	-	0.26	-	-	-	-	-	0.07	-
NEWARK INTL AP R	4.78				T	0.37									T	0.73	0.13	0.47	2.26	T	0.17	0.32	T	0.03					T		0.30		
NEW MILFORD R	4.88				0.22	0.03	0.15	0.02							1.35	0.18	1.06	1.15	0.02	0.01	0.01		0.21								0.47		
OAK RIDGE RSVR	M	-	-	-	-	-	-	-	-	-	-	-	-	-	-	-	-	-	-	-	-	-	-	-	-	-	-	-	-	-	-	-	
PLAINFIELD	M 3.27	-	-	-	-	-	-	-	-	-	-	-	-	-	0.95	0.15	0.34	0.94	-	0.08	-	0.08	-	-	-	-	-	-	-	-	0.73	-	
POTTERSVILLE 2 NNW	4.99				0.42	0.31				T					0.73	0.20	0.43	0.57	0.58	0.26	0.22	T	0.02	0.88	T					0.37			
RINGWOOD	4.69				0.45										0.70	0.48	0.58	0.65	1.10		T	T	0.10	0.23							0.40		
SUSSEX 2 NW	6.09				0.30	0.27									0.37	0.58	0.59	0.65	1.78	0.03	0.11	0.46	0.08	0.37	0.01		0.25			0.24			
WERTSVILLE 4 NE	M 4.02				0.21	0.39									0.78	0.59	0.34	0.48	-	0.30	0.19	0.32	-	0.02						0.40			
WOODCLIFF LAKE R	4.89				0.34										1.10	0.25	1.03	1.30	0.28	0.01	0.04		0.30							0.24			
SOUTHERN 02																																	
ATLANTIC CITY INTL AP	3.49	0.03			0.91	0.01	0.04	0.03	0.02	0.03					T	0.80	0.01	0.76	0.19	0.03	0.06			0.57									
ESTELL MANOR	2.16				0.11	0.77				T					0.28	0.08	0.22	0.17	0.21	0.02	0.15			0.15									
FREEHOLD-MARLBORO	2.84				0.22	0.57									0.17	0.08	0.27	0.40	0.41	0.05	0.23		0.16	T							0.28		
HAMMONTON 1 NE	F 1.71				0.35	0.86				0.01					0.00 ^L	0.19 ^L	0.14	0.29 ^L	0.35 ^L	0.08	0.09	0.15	0.01	0.02									
HIGHTSTOWN 2 W	M 3.65					0.55									0.39	0.68	0.20	0.34	0.81	0.08	0.12	0.16	-	0.01						T	0.31	T	
INDIAN MILLS 2 W	3.05				0.79										0.24	0.23	0.11	0.30	1.11		0.27												
MAYS LANDING 1 W	2.33				0.93										0.19	0.26		0.19	0.11	0.04	0.49			T									
MILLVILLE MUNI AP	M 1.63				0.91		T	T	T						0.16	0.12	0.22	0.14	0.05	-	-	0.01	0.01										
MOORESTOWN	M 3.03				0.60	T		0.02	T		-	-			0.06	0.16	0.08	0.39	0.60	0.10	0.12	T	0.05	0.10	T					T	0.01	0.75	
NEW BRUNSWICK 3 SE	3.17				0.11	0.43									0.33	0.10	0.24	0.62	0.64	0.04	0.30	T	0.07								0.29		
SEABROOK FARMS	1.95				0.30	0.43		0.10	0.04						0.36	0.11	0.17	0.06	0.07	0.08	0.23												
SOMERDALE 4 SW	2.59				0.23	0.38			T						0.21	0.07	0.36	0.17	0.31	0.41	0.35		0.03	0.02	T					0.05			
TOMS RIVER	M	-	-	-	-	-	-	-	-	-	-	-	-	-	-	-	-	-	-	-	-	-	-	-	-	-	-	-	-	-	-	-	
COASTAL 03																																	
ATLANTIC CITY	1.97				0.64											0.24		0.26	0.51	0.01	0.18			0.13									
BRANT BEACH BECH HAVEN	2.21					0.47									0.38			0.40	0.70		0.14			0.12									
CAPE MAY 2 NW	1.89				0.78	T			T						T	0.53		0.19	0.09	0.02	0.17			0.11									

NEW JERSEY
201105

DAILY PRECIPITATION (INCHES)

STATION	TOTAL	DAY OF MONTH																																			
		01	02	03	04	05	06	07	08	09	10	11	12	13	14	15	16	17	18	19	20	21	22	23	24	25	26	27	28	29	30	31					
SANDY HOOK	M 5.04		-	-	T	1.05		-		-						0.20				1.23	1.20				0.63	0.53	0.02				-	-				0.18	

NEW JERSEY
201105

DAILY TEMPERATURES (°F)

STATION	OB. TIME	MAX/MIN	DAY OF MONTH																															AVERAGE
			01	02	03	04	05	06	07	08	09	10	11	12	13	14	15	16	17	18	19	20	21	22	23	24	25	26	27	28	29	30	31	
NEW BRUNSWICK 3 SE	07	MIN	19 ^s	31	40	30	32	24	31	49	28	32	20 ^s	30	32	36	35	45	45	43	43	37	25	41	48	40	42	41	44	28 ^s	44	37 ^s	40 ^s	37.2
		MAX	68	69	68	77	56	67	72	74	75	73	75	72	66	69	66	72	62	61	71	71	67	79	61	71	84	85	89	89	87	87	90	73.3
SEABROOK FARMS	08	MIN	40	48	53	56	49	37	46	42	46	48	44	49	50	52	56	58	54	55	59	55	51	54	54	59	59	58	62	66	64	68	66	53.5
		MAX	66	68	68	82	56	67	71	72	73	73	74	72	72	70	64	76	77	69	71	76	70	80	70	81	87	85	90	86	84	86	95	75.2
SOMERDALE 4 SW	07	MIN	45	55	55	51	45	44	49	47	47	49	47	50	50	56	60	62	60	61	57	54	55	59	60	64	65	65	69	67	68	61	71	56.4
		MAX	67	71	76	82	52	66	73	75	76	76	77	74	79	75	66	77	73	67	67	77	70	80	66	78	85	86	91	88	86	87	94	76.0
TOMS RIVER	24	MAX	39	48	52	52	43	36	38	41	45	44	42	44	47	53	60	60	56	55	56	57	48	59	57	58	59	60	63	65	63	69	69	52.8
		MIN																																
COASTAL 03 ATLANTIC CITY	24	MAX	63	60	64	64	64	61	71	64	64	63	60	63	59	61	66	64	63	63	65	66	66	63	67	75	74	73	73	73	73	81	78	66.6
		MIN	53	54	58	48	47	51	55	53	55	53	51	55	55	58	60	61	60	60	60	59	57	57	60	64	66	65	68	67	68	69	66	58.5
BRANT BEACH BECH HAVEN	07	MAX	60	64	62	66	60	64	64	72	70	65	67	64	64	64	66	69	68	66	66	69	69	72	61	68	79	75	74	78	76	77	85	68.5
		MIN	49	51	53	56	46	48	52	51	52	51	48	51	53	55	58	59	58	59	58	56	55	56	56	61	64	62	64	62	64	66	69	56.2
CAPE MAY 2 NW	24	MAX	69	65	70	64	67	71	72	71	71	70	65	73	66	64	72	75	67	68	72	71	78	68	72	86	82	82	80	80	92	89	89	73.3
		MIN	44	54	57	50	48	52	53	47	48	49	48	47	51	54	59	60	60	60	59	57	55	58	61	66	66	65	67	65	66	68	67	56.8
SANDY HOOK	20	MAX	69			64	57	65		70		74	72	69	69	64	63	68	69	70	65	67	64	74	66	70	81	81		83	83	89	70.6	
		MIN	47			53	48	46		51		51	50	53	52	56	56	57	55	57	53	55	52	54	54	58	62	61		64	64	69	55.1	

NEW JERSEY
201105

DAILY SOIL TEMPERATURES

STATION	DEPTH	TIME	DAY OF MONTH																															AVERAGE
			01	02	03	04	05	06	07	08	09	10	11	12	13	14	15	16	17	18	19	20	21	22	23	24	25	26	27	28	29	30	31	
NEW JERSEY																																		
SOUTHERN 02																																		
NEW BRUNSWICK 3 SE (IN)																																		
BARE GROUND	2	MAX	71	74	65	73	62	71	72	73	75	77	77	78	-	-	65	68	65	61	66	74	-	78	65	66	80	84	85	86	86	85	86	73.9
	2	MIN	53	50	55	58	54	51	47	51	52	55	55	60	-	-	59	58	57	58	59	63	-	59	62	60	66	64	66	68	69	68	71	58.9
BARE GROUND	4	MAX	70	72	65	72	64	69	70	73	73	75	75	76	-	-	67	69	62 ¹	63	64	73	-	77	67	68	80	82	84	85	85	84	86	73.6
	4	MIN	55	53	57	58	58	52	51	55	56	58	60	62	-	-	62	64 ¹	60	61	61	64	-	61	63	62	67	67	68	70	68	69	73	61.1
BARE GROUND	8	MAX	63	69	61	65	63	63	63	65	65	66	67	68	-	-	64	65	62	60	61	66	-	69	64	64	72	73	80	81	83	78	78	67.8
	8	MIN	57	57	56	56	56	54	54	55	55	58	58	59	-	-	60	60	57	59	59	60	-	61	62	59	62	64	65	66	65	70	71	59.8
SOD	4	MAX	60	60	57	61	61	60	60	61	60	62	62	63	-	-	60	60	60	60	59	63	-	65	63	61	66	68	70	71	72	72	74	63.3
	4	MIN	57	56	57	58	57	56	56	57	57	58	58	59	-	-	60	60	60	59	59	59	-	61	62	61	61	64	65	67	68	68	69	60.3
SOD	8	MAX	61	62	61	60	63	61	60	62	63	65	67	66	-	-	61	62	61	59	59	62	-	66	64	61	68	70	71	72	73	73	75	64.6
	8	MIN	57	57	51	55	55	52	54	58	56	58	58	60	-	-	59	59	59	58	58	59	-	61	61	60	61	65	62	67	69	68	71	59.6

NEW JERSEY
201105

SOILS REFERENCE NOTES

STATION
NEW BRUNSWICK 3 SE

SOIL TYPE
LOAM

SOIL COVER
BARE GROUND

SLOPE
4

UNITS
F

NEW JERSEY
201105

SNOWFALL AND SNOW ON GROUND (INCHES)

STATION	DAY OF MONTH																															
	01	02	03	04	05	06	07	08	09	10	11	12	13	14	15	16	17	18	19	20	21	22	23	24	25	26	27	28	29	30	31	
NEW JERSEY NORTHERN 01																																

Snowfall: Includes snow and ice. Values for NWS stations (J index note) are Mid-Mid (LST).

Snow on ground: Includes snow, sleet, ice, and hail. Values for NWS stations (J index note) are observed at 12 UTC (GMT).

Water Equivalent: Given for NWS stations (J index note) only, when snow depth is 2 inches or more, and is measured at 18 UTC (GMT)

STATION INDEX

STATION	INDEX NO.	DIVISION	COUNTY	LATITUDE	LONGITUDE	ELEVATION (IN FEET)	OBSERVATION TIME AND TABLES			
							LOCAL STD TIME			
							TEMP	PRECIP	EVAP	SPECIAL SEE (NOTES)
NEW JERSEY										
ATLANTIC CITY	0325	03	ATLANTIC	39 23	74 25W	10	24	24		C
ATLANTIC CITY INTL AP	0311	02	ATLANTIC	39 27	74 34W	60	24	24		C
BELVIDERE BRG	0734	01	WARREN	40 50	75 5W	263	07	07		C
BOUND BROOK 2W	0927	01	SOMERSET	40 34	74 35W	50		07		C
BRANT BEACH BECH HAVEN	0990	03	OCEAN	39 34	74 15W	5	07	07		C
CANISTEAR RSVR	1327	01	SUSSEX	41 7	74 29W	1100		08		C
CANOE BROOK	1335	01	ESSEX	40 45	74 21W	180	08	08	08	C
CAPE MAY 2 NW	1351	03	CAPE MAY	38 57	74 56W	20	24	24		C
CHARLOTTEBURG RESERVE	1582	01	PASSAIC	41 2	74 25W	760	07	07		C
CRANFORD	2023	01	UNION	40 40	74 19W	75	08	08		C
ESSEX FELS SVC BLDG	2768	01	ESSEX	40 50	74 17W	350	08	08		C
ESTELL MANOR	2805	02	ATLANTIC	39 23	74 50W	85	08	08		C
FLEMINGTON 5 NNW	3029	01	HUNTERDON	40 34	74 53W	260	07	07		C
FREEHOLD-MARLBORO	3181	02	MONMOUTH	40 19	74 15W	194	07	07		C
GREENWOOD LAKE	3516	01	PASSAIC	41 8	74 19W	470		07		C
HAMMONTON 1 NE	3662	02	ATLANTIC	39 39	74 48W	90	07	07		C
HARRISON	3704	01	HUDSON	40 45	74 9W	24	24	24		C
HIGHTSTOWN 2 W	3951	02	MERCER	40 16	74 34W	100	07	07		C
INDIAN MILLS 2 W	4229	02	BURLINGTON	39 49	74 47W	100	17	17		C
LAMBERTVILLE	4635	01	HUNTERDON	40 22	74 57W	68		09		C
LITTLE FALLS	4887	01	PASSAIC	40 53	74 14W	150	08	08		C
MAYS LANDING 1 W	5346	02	ATLANTIC	39 27	74 45W	20		09		C
MIDLAND PARK	5503	01	BERGEN	40 60	74 9W	210		08		C
MILLVILLE MUNI AP	5581	02	CUMBERLAND	39 22	75 5W	70	24	24		C
MOORESTOWN	5728	02	BURLINGTON	39 57	74 58W	45	18	18		C
NEW BRUNSWICK 3 SE	6055	02	MIDDLESEX	40 28	74 26W	86	07	07	07	CG
NEW MILFORD	6146	01	BERGEN	40 58	74 1W	12		24		C
NEWARK INTL AP	6026	01	ESSEX	40 41	74 10W	7	24	24		C
OAK RIDGE RSVR	6460	01	MORRIS	41 0	74 30W	880		08		C
PLAINFIELD	7079	01	UNION	40 36	74 24W	90	19	19		C
POTTERSVILLE 2 NNW	7301	01	MORRIS	40 44	74 44W	365		08		C
RINGWOOD	7587	01	PASSAIC	41 6	74 16W	305		07		C
SANDY HOOK	7865	03	MONMOUTH	40 28	74 0W	10	20	20		C
SEABROOK FARMS	7936	02	CUMBERLAND	39 29	75 13W	90	08	08		C
SOMERDALE 4 SW	8173	02	CAMDEN	39 50	75 3W	55	07	07		C
SUSSEX 2 NW	8644	01	SUSSEX	41 13	74 40W	649	07	07		C
TOMS RIVER	8816	02	OCEAN	39 57	74 13W	100	24	24		C
WERTSVILLE 4 NE	9363	01	HUNTERDON	40 27	74 48W	240	07	07		C
WOODCLIFF LAKE	9832	01	BERGEN	41 1	74 3W	103		24		C



CLIMATOLOGICAL DATA

NEW JERSEY



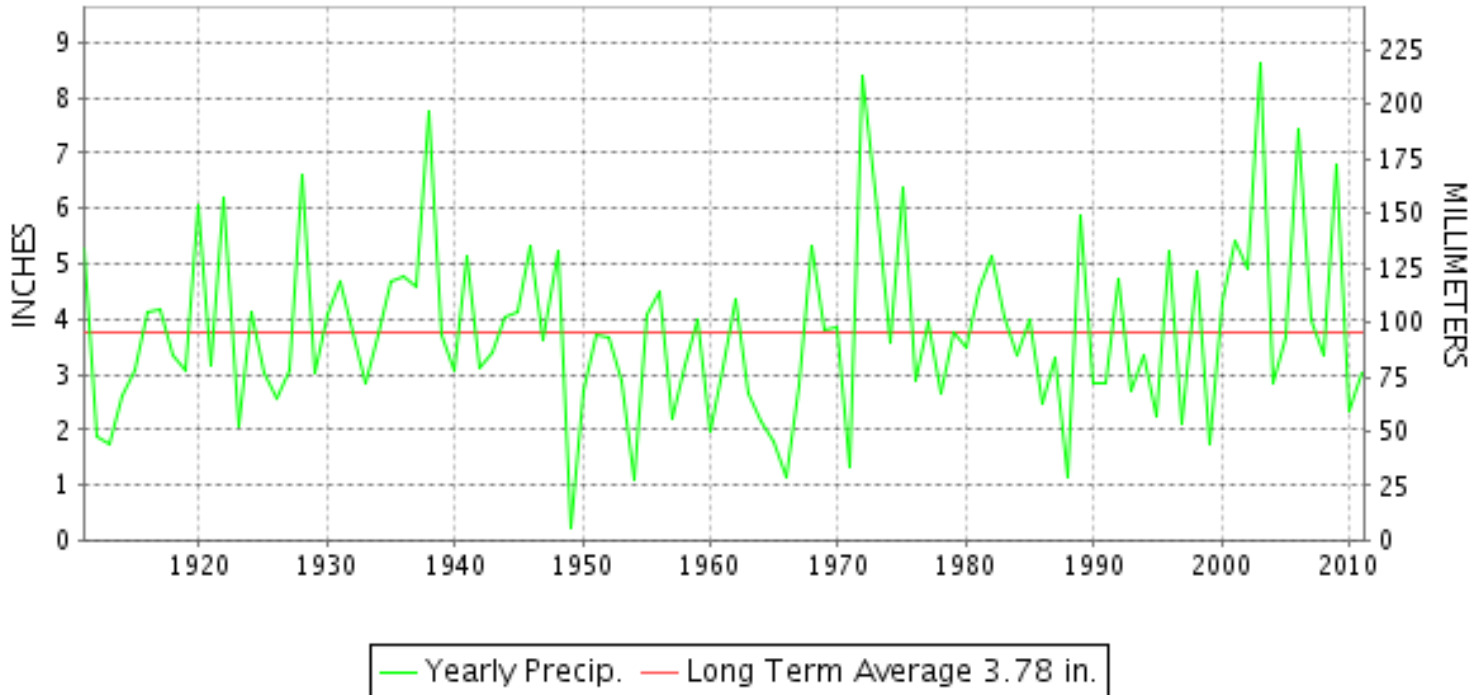
JUNE 2011

VOLUME 116 NUMBER 06

ISSN 0364-5614

GHCND Ver: 2.80-upd-2011111606

JUNE PRECIPITATION BY YEAR



TEMPERATURE AND PRECIPITATION EXTREMES

NEW JERSEY

HIGHEST TEMPERATURE	103	JUNE 10	CANOE BROOK
LOWEST TEMPERATURE	43	JUNE 04	INDIAN MILLS 2 W
GREATEST TOTAL PRECIPITATION	8.23		RINGWOOD
LEAST TOTAL PRECIPITATION	1.17		INDIAN MILLS 2 W
GREATEST 1 DAY PRECIPITATION	4.00	JUNE 23	RINGWOOD

"I certify that this is an official publication of the National Oceanic and Atmospheric Administration (NOAA) It is compiled using information from weather observing sites supervised by NOAA/National Weather Service and received at the National Climatic Data Center(NCDC), Asheville, North Carolina 28801."

Director
National Climatic Data Center

noaa

National
Oceanic and
Atmospheric Administration

National
Environmental Satellite, Data
and Information Service

National
Climatic Data Center
Asheville, North Carolina

NEW JERSEY
201106

DAILY PRECIPITATION (INCHES)

STATION	TOTAL	DAY OF MONTH																																
		01	02	03	04	05	06	07	08	09	10	11	12	13	14	15	16	17	18	19	20	21	22	23	24	25	26	27	28	29	30	31		
SANDY HOOK	M 1.83		0.10		-						0.11	-	-	0.95				0.30	-	-				0.28	-	0.09							-	

NEW JERSEY
201106

DAILY TEMPERATURES (°F)

STATION	OB. TIME	MAX/MIN	DAY OF MONTH																															AVERAGE		
			01	02	03	04	05	06	07	08	09	10	11	12	13	14	15	16	17	18	19	20	21	22	23	24	25	26	27	28	29	30	31			
NEW BRUNSWICK 3 SE	07	MIN											30 ^s																							M
		MAX	89	92	80	77	76	70	82	89	96	97	90	67	75	75	72	83	84	81	86	84	84	83	81	76	70	84	81	85	85	84			81.9	
SEABROOK FARMS	08	MIN	66	62	49	49	55	56	58	64	70	66	66	59	60	55	52	56	64	60	63	60	66	65	68	66	65	61	60	66	69	58			61.1	
		MAX	95	96	85	80	80	76	84	90	96	99	91	86	85	77	77	84	81	83	87	88	78	85	91	89	90	85	82	82	84	85			85.7	
SOMERDALE 4 SW	07	MIN	70	68	56	51	66	59	65	68	73	70	70	66	66	58	56	62	67	64	67	66	65	70	74	70	67	63	68	66	72	61			65.5	
		MAX	97	96	84	81	81	78	84	90	98	100	89	79	82	76	77	85	80	84	89	87	82	86	93	87	91	87	81	83	81	88			85.9	
TOMS RIVER	24	MAX																																	M	
		MIN																																		M
COASTAL 03 ATLANTIC CITY	24	MAX	77	82	76	72	67	72	82	92	92	81	74	73	70	69	80	77	77	81	76	73	75	79	87	78	78	81	76	78	84	81			78.0	
		MIN	69	64	60	58	63	63	67	71	68	68	70	66	66	62	58	68	70	70	71	69	68	71	70	72	72	70	71	72	72	68			67.6	
BRANT BEACH BECH HAVEN	07	MAX	80	79	81	75	76	73	77	87	92	96	84	79	73	73	72	82	83	78	85	79	78	79	83	88	82	82	84	81	80	87			80.9	
		MIN	68	69	58	55	57	62	65	67	72	66	68	64	65	62	57	59	67	68	70	67	66	68	70	69	69	69	70	71	72	65			65.8	
CAPE MAY 2 NW	24	MAX	83	86	78	80	76	80	88	92	99	92	83	83	80	77	82	80	83	88	83	79	80	86	89	87	87	84	83	87	87	84			84.2	
		MIN	69	67	53	57	63	61	64	68	72	67	70	69	60	57	56	63	68	67	68	60	60	70	73	69	67	65	69	68	68	65			65.1	
SANDY HOOK	20	MAX	83	94	79		74	74	82	89	92	98			72	75	70	82	87				81	80	83	78		72	80	86	83	84			81.7	
		MIN	66	70	59		59	59	64	70	73	70			59	60	57	60	66				61	68	68	68		65	68	69	67	73			65.2	

NEW JERSEY
201106

DAILY SOIL TEMPERATURES

STATION	DEPTH	TIME	DAY OF MONTH																															AVERAGE
			01	02	03	04	05	06	07	08	09	10	11	12	13	14	15	16	17	18	19	20	21	22	23	24	25	26	27	28	29	30	31	
NEW JERSEY																																		
SOUTHERN 02																																		
NEW BRUNSWICK 3 SE (IN)																																		
BARE GROUND	2	MAX	88	88	87	89	81	78	87	91	96	96	93	76	77	81	78	84	81	80	85	86	87	81	82	74 ¹	73	84	81	89	87	91	84.7	
	2	MIN	72	71	66	66	68	69	69	70	73	76	72	66	68	69	64	65	69	69	68	71	71	73	76 ¹	69	69	70	69	70	76	72	69.7	
BARE GROUND	4	MAX	87	88	84	86	76	80	85	90	93	94	91	78	79	82	78	84	77	79	84	86	85	81	82	78	75	83	82	84	88	86	83.5	
	4	MIN	75	71	66	68	69	70	69	70	74	77	75	70	70	70	67	68	68	68	71	72	70	71	71	70	69	69	71	71	75	75	70.7	
BARE GROUND	8	MAX	80	80	85	79	79	79	77	81	84	90	84	77	75	76	73	77	75	75	78	79	78	78	77	76	71	82	78	79	80	83	78.8	
	8	MIN	71	72	70	68	68	68	67	70	72	75	76	70	68	70	67	66	68	69	70	70	71	71	70	70	70	69	70	70	72	73	70.0	
SOD	4	MAX	75	75	74	72	67	68	70	72	75	76	76	73	71	72	71	73	71	72	73	75	74	74	74	72	72	74	74	75	75	77	73.1	
	4	MIN	71	71	69	68	66	66	67	67	64	72	72	70	69	69	67	67	69	69	69	69	70	71	72	71	71	71	71	71	72	73	69.5	
SOD	8	MAX	76	76	77	74	70	70	73	76	78	79	79	75	71	72	71	73	71	71	73	75	75	73	73	73	72	73	73	75	76	78	74.0	
	8	MIN	69	71	69	67	67	67	66	68	69	72	73	69	68	68	65	63	67	67	67	69	70	68	72	70	69	69	70	69	71	72	68.7	

NEW JERSEY
201106

SOILS REFERENCE NOTES

STATION
NEW BRUNSWICK 3 SE

SOIL TYPE
LOAM

SOIL COVER
BARE GROUND

SLOPE
4

UNITS
F

NEW JERSEY
201106

SNOWFALL AND SNOW ON GROUND (INCHES)

STATION	DAY OF MONTH																															
	01	02	03	04	05	06	07	08	09	10	11	12	13	14	15	16	17	18	19	20	21	22	23	24	25	26	27	28	29	30	31	
NEW JERSEY NORTHERN 01																																

Snowfall: Includes snow and ice. Values for NWS stations (J index note) are Mid-Mid (LST).

Snow on ground: Includes snow, sleet, ice, and hail. Values for NWS stations (J index note) are observed at 12 UTC (GMT).

Water Equivalent: Given for NWS stations (J index note) only, when snow depth is 2 inches or more, and is measured at 18 UTC (GMT)

STATION INDEX

STATION	INDEX NO.	DIVISION	COUNTY	LATITUDE	LONGITUDE	ELEVATION (IN FEET)	OBSERVATION TIME AND TABLES					
							LOCAL STD TIME					
							TEMP	PRECIP	EVAP	SPECIAL SEE (NOTES)		
NEW JERSEY												
ATLANTIC CITY	0325	03	ATLANTIC	39 23	74 25W	10	24	24				C
ATLANTIC CITY INTL AP	0311	02	ATLANTIC	39 27	74 34W	60	24	24				C
BELVIDERE BRG	0734	01	WARREN	40 50	75 5W	263	07	07				C
BOUND BROOK 2W	0927	01	SOMERSET	40 34	74 35W	50		07				C
BRANT BEACH BECH HAVEN	0990	03	OCEAN	39 34	74 15W	5	07	07				C
CANISTEAR RSVR	1327	01	SUSSEX	41 7	74 29W	1100		08				C
CANOE BROOK	1335	01	ESSEX	40 45	74 21W	180	08	08	08			C
CAPE MAY 2 NW	1351	03	CAPE MAY	38 57	74 56W	20	24	24				C
CHARLOTTEBURG RESERVE	1582	01	PASSAIC	41 2	74 25W	760	07	07				C
CRANFORD	2023	01	UNION	40 40	74 19W	75	08	08				C
ESSEX FELS SVC BLDG	2768	01	ESSEX	40 50	74 17W	350	08	08				C
ESTELL MANOR	2805	02	ATLANTIC	39 23	74 50W	85	08	08				C
FLEMINGTON 5 NNW	3029	01	HUNTERDON	40 34	74 53W	260	07	07				C
FREEHOLD-MARLBORO	3181	02	MONMOUTH	40 19	74 15W	194	07	07				C
GREENWOOD LAKE	3516	01	PASSAIC	41 8	74 19W	470		07				C
HAMMONTON 1 NE	3662	02	ATLANTIC	39 39	74 48W	90	07	07				C
HARRISON	3704	01	HUDSON	40 45	74 9W	24	24	24				C
HIGHTSTOWN 2 W	3951	02	MERCER	40 16	74 34W	100	07	07				C
INDIAN MILLS 2 W	4229	02	BURLINGTON	39 49	74 47W	100	17	17				C
LAMBERTVILLE	4635	01	HUNTERDON	40 22	74 57W	68		09				C
LITTLE FALLS	4887	01	PASSAIC	40 53	74 14W	150	08	08				C
MAYS LANDING 1 W	5346	02	ATLANTIC	39 27	74 45W	20		09				C
MIDLAND PARK	5503	01	BERGEN	40 60	74 9W	210		08				C
MILLVILLE MUNI AP	5581	02	CUMBERLAND	39 22	75 5W	70	24	24				C
MOORESTOWN	5728	02	BURLINGTON	39 57	74 58W	45	18	18				C
NEW BRUNSWICK 3 SE	6055	02	MIDDLESEX	40 28	74 26W	86	07	07	07			CG
NEW MILFORD	6146	01	BERGEN	40 58	74 1W	12		24				C
NEWARK INTL AP	6026	01	ESSEX	40 41	74 10W	7	24	24				C
OAK RIDGE RSVR	6460	01	MORRIS	41 0	74 30W	880		08				C
PLAINFIELD	7079	01	UNION	40 36	74 24W	90	19	19				C
POTTERSVILLE 2 NNW	7301	01	MORRIS	40 44	74 44W	365		08				C
RINGWOOD	7587	01	PASSAIC	41 6	74 16W	305		07				C
SANDY HOOK	7865	03	MONMOUTH	40 28	74 0W	10	20	20				C
SEABROOK FARMS	7936	02	CUMBERLAND	39 29	75 13W	90	08	08				C
SOMERDALE 4 SW	8173	02	CAMDEN	39 50	75 3W	55	07	07				C
SUSSEX 2 NW	8644	01	SUSSEX	41 13	74 40W	649	07	07				C
TOMS RIVER	8816	02	OCEAN	39 57	74 13W	100	24	24				C
WERTSVILLE 4 NE	9363	01	HUNTERDON	40 27	74 48W	240	07	07				C
WOODCLIFF LAKE	9832	01	BERGEN	41 1	74 3W	103		24				C